

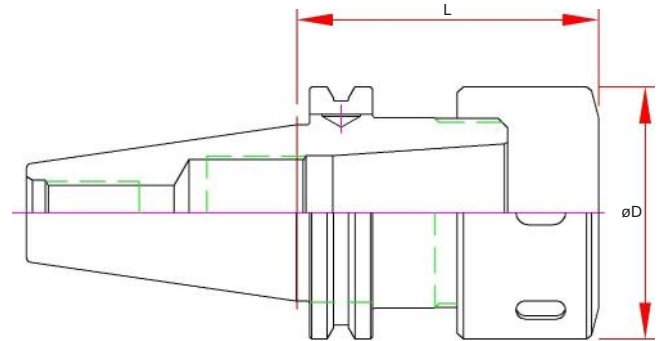
# TG - Collet Chuck

## Features

- 3  $\mu\text{m}$  - 0.0001" Runout Taper to Taper
- Coolant Thru Body
- Dynamically Pre-Balanced @ 20,000 RPM (CAT50 @ 15,000 RPM)
- Tapers are ground better than AT3 for optimal T.I.R.

## Optional (Order Separately):

- Wrench
- Torque Wrench
- Collets
- DIN-B Coolant (Select models)

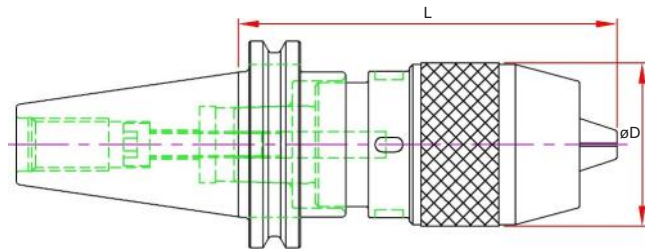


Part Number	Range	D	L Projection	Collet	Screw	Nut	Wrench
CAT50-TG100-0350	.094 - 1.00	2.48	3.50	TG100	ASC-ER40	TGN100	58-65 HOOK
CAT50-TG100-0550			5.50				

# DC - Drill Chuck

## Features:

- Non Coolant
- Keyless w/ slots for spanner wrench (sold separately)



Part Number	Range	D	L Projection	Wrench
CAT50-DC050-0394	0.04 - 0.50	1.96	3.94	DCW13