

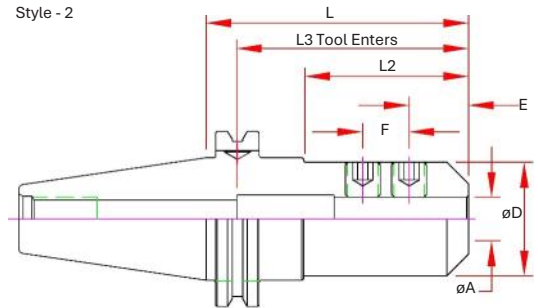
CAT40 End Mill Adapters—Metric

Features

- 3 μm - 0.0001" Bore Runout
- H5 Bore Tolerance or better
- Tapers are ground better than AT3 for optimal T.I.R.
- Coolant Thru
- Pre-Balanced for use @ 20,000 RPM (CAT50 @ 15,000 RPM)

Optional (Order Separately):

- Jet-Blast (add "J" to the part number)
- DIN-B Coolant (Select models)



Part Number	A Bore	D	E	F	L Projection	L2	L3 Max. Tool Enters	Screw #	Style
CAT40-EMM06-0250	6mm	0.78	0.38	-	2.50	0.93	4.06	4	2
CAT40-EMM08-0250	8mm	0.88	0.44	-	2.50	1.00	4.06	4	2
CAT40-EMM10-0250	10mm	1.00	0.75	-	2.50	1.00	4.06	5	2
CAT40-EMM12-0250	12mm	1.25	0.87	-	2.50	1.00	4.06	6	2
CAT40-EMM16-0250	16mm	1.50	0.94	-	2.50	1.73	3.94	7	2
CAT40-EMM20-0250	20mm	1.75	1.00	-	2.50	1.73	3.94	8	2
CAT40-EMM25-0300	25mm	2.00	0.94	0.98	3.00	2.25	3.15	(2) 10	2
CAT40-EMM32-0400	32mm	2.50	0.94	1.10	4.00	2.25	3.54	(2) 11	2



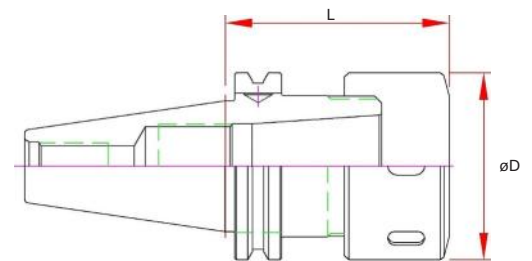
TG - Collet Chuck

Features

- 3 μm - 0.0001" Runout Taper to Taper
- Coolant Thru Body
- Dynamically Pre-Balanced @ 20,000 RPM (CAT50 @ 15,000 RPM)
- Tapers are ground better than AT3 for optimal T.I.R.

Optional (Order Separately):

- Wrench
- Torque Wrench
- Collets
- DIN-B Coolant (Select models)



Part Number	Range	D	L Projection	Collet	Screw	Nut	Wrench
CAT40-TG100-0300	.094 - 1.00	2.48	3.00	TG100	ASC-ER40	TGN100	58-65 HOOK