

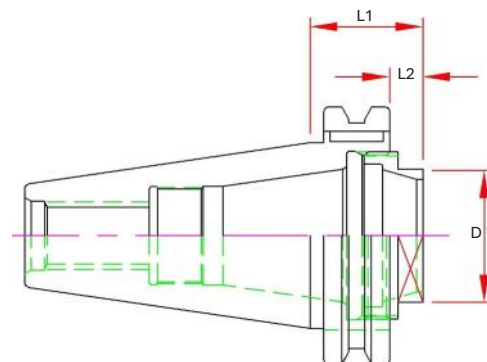
CAT40 ER32 Stub Collet Chucks

Features

- 3 μm - 0.0001" Runout Taper to Taper
- Coolant Thru Body
- Dynamically Pre-Balanced G6.3 @ 20,000 RPM or <1gmm
- Tapers are ground better than AT3 for optimal T.I.R.

Optional (Order Separately):

- Wrench
- Torque Wrench
- Collets
 - 0.010mm (0.0004") Standard
 - 0.005mm (0.0002") Ultra Precision
 - Sealed
 - Jet-Blast
- Fine Trim Balance (Sample cutter required for balance compensation)



Part Number	Range	D	L1 Projection	L2	Nut	Wrench
CAT40-ER32-0106	.039-.787	32mm Hex	1.06	0.31	ERN-32H-EXT	DAW-180



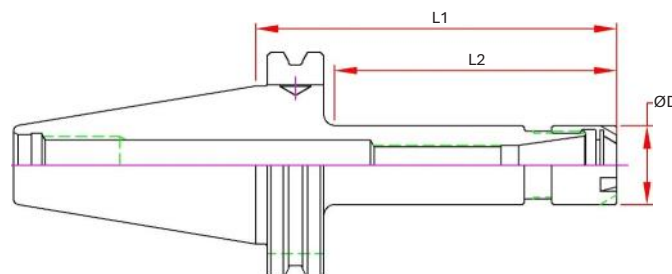
CAT40 ER Mini Collet Chucks

Features

- 3 μm - 0.0001" Runout Taper to Taper
- Coolant Thru Body
- Dynamically Pre-Balanced G6.3 @ 20,000 RPM or <1gmm
- Tapers are ground better than AT3 for optimal T.I.R.

Optional (Order Separately):

- Wrench
- Torque Wrench
- Collets
 - 0.010mm (0.0004") Standard
 - 0.005mm (0.0002") Ultra Precision
 - Sealed
 - Jet-Blast
- Fine Trim Balance (Sample cutter required for balance compensation)



Part Number	Range	D	L1 Projection	L2	Screw	Nut	Wrench
CAT40-ER11M-0250			2.50	1.56			
CAT40-ER11M-0400	.019-.276	0.63	4.00	2.42	ASC-ER11	ERN-11M	ERW-11M
CAT40-ER11M-0600			6.00	4.42			
CAT40-ER16M-0250			2.50	1.56			
CAT40-ER16M-0400	.019-.394	0.87	4.00	2.42	ASC-ER16	ERN-16M	ERW-16M
CAT40-ER16M-0600			6.00	4.42			
CAT40-ER16M-0800			8.00	6.42			

