

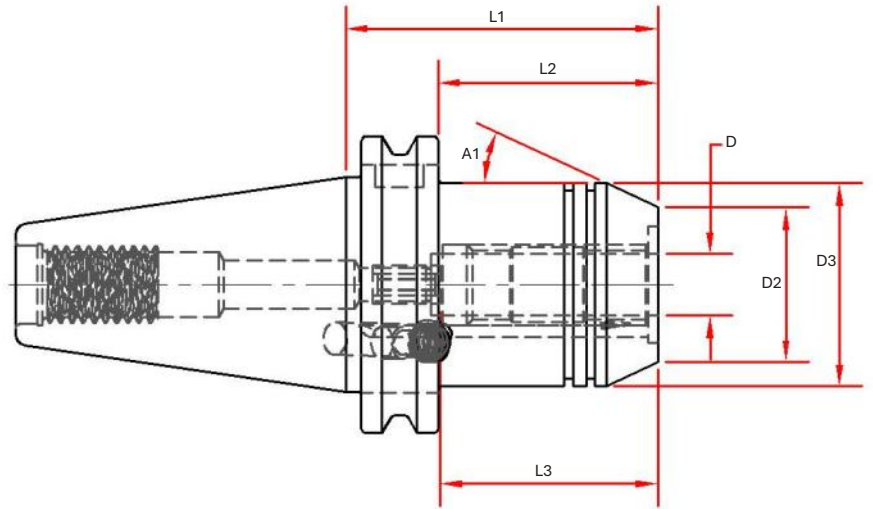
CAT40 Hydraulic Chucks

Features

- * 3 μm - 0.0001" or less run-out providing premium performance in drilling and reaming applications
- Positive Locking System
- Coolant Thru the Center
- Designed for Tool Shanks w/ ISO h6 Class Tolerance
- Dynamically Pre-Balanced G2.5 @ 25,000 RPM or < 1gmm
- Tapers are ground better than AT3 for optimal T.I.R.

Optional (Order Separately):

- Wrench
- Sealed Collets
- Mill Chuck Collets



Dual Contact Spindle Part Number	Part Number	D Bore	D2	D3	A1	L1 Projection	L2	L3 Max Tool Enters	Wrench
	CAT40-HC037-0250	0.3750	1.08	1.57		2.50	1.75	1.69	HCW04
	CAT40-HC050-0254	0.5000	1.26	1.65	24.5°	2.54	1.79	1.81	
	CAT40-HC062-0250	0.6250	1.38	1.75		2.50	1.75	2.06	
CAT40-HC075-0126-B		0.7500	1.65	1.94	25°	1.26	0.51	2.01	HCW05
CAT40-HC075-0254-B	CAT40-HC075-0254	0.7500	1.50	1.94	25°	2.54	1.79	2.01	
CAT40-HC100-0250-B	CAT40-HC100-0250	1.0000	2.09	2.25		2.50	1.75	2.24	
	CAT40-HC125-0400	1.2500	2.28	2.44		4.00	2.25	2.40	

CAT 40
CAT50
BT30
BT40
HSK 40E
HSK 63A
HSK 100A
STR. SHANKS
COLLETS
ACC.
SHRINK MACH
INDEXERS

