

SALES@PIONEERNA.COM

YAMAWA BY PIONEER

WWW.PIONEERNA.COM

YAMAWA GENERAL CATALOG

[JIS · ANSI · DIN]

2023 - 2024

CHICAGO INVENTORY
04.2024

100th
Thanks & To the Future with You

CHICAGO SUPPLEMENTAL
INVENTORY
**DON'T SEE IT?
GIVE US A CALL!**
847.593.6000

Z-PRO



Think threads with
YAMAWA
SINCE 1923

CHICAGO INVENTORY 1

A handy application for quick search

An easy-to-use application for helping you quickly and smoothly find products and information from anywhere, anytime

App Store

Google Play



Download now

It's so simple!

I want to use my smartphone as a handy tool for search.

I want to solve problems.

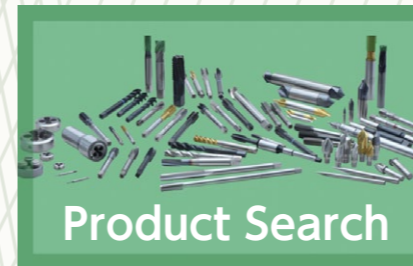
I have difficulties on-site.

Finding the right product is now much quicker!

I need advice as soon as possible.



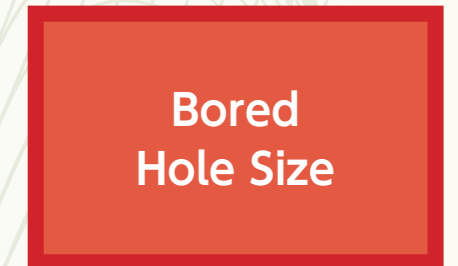
Quickly find the right tap and tapping conditions!



Easily find the right tap for the intended use.



Use the handy calculator to convert a recommended tapping speed into revolution speed/feed.



Use the handy tool to calculate a recommended bored hole size for a specific thread size.

SP(Spiral Fluted Taps for blind hole) ▾
 GLOBAL AREA: ENGLISH (JIS) ▾
 JIS ▾
 Blind ▾
 M:Metric threads ▾
 6 ▾
 1 ▾
 High carbon steels ▾
 VUSP ▾
 results: 3/13734 Show rows: 30 ▾

Product symbol	Materials	Size	Class	OAL	Shank dia.(Ds)	Surface Treatment
VUSP	HSS-P	M6X1	P2	80	6	Coating
VUSP	HSS-P	M6X1	P3	80	6	Coating
VUSP	HSS-P	M6X1	P4	80	6	Coating

Speed & Feed Calculator

mm inch

M:Metric threads ▾

Nominal size Pitch/Number of threads
 6 1

m/min
 30 Calculate

rpm
 1592 Calculate

Feed (mm/min)
 1592

Feed (mm/rev)
 1

© 2007-2017 YAMAWA MFG. Co., Ltd. All rights reserved.

Bored Hole Size Calculator

Forming Taps ▾
 M:Metric threads ▾

Nominal size Pitch/Number of threads
 6 1

Class for forming taps G7 ▾

Recommended bored hole size (inch) 0.2189

Recommended bored hole size (mm) 5.56

© 2007-2017 YAMAWA MFG. Co., Ltd. All rights reserved.

Find products on your smartphone wherever you are.

At a production site



If you need a new tap on-site, search for it on your smartphone right away.

In a design department



Input search parameter to find the best suited tap for your design drawing from many of YAMAWA products.

At a trading company



If you find it difficult to search through many products, use the tool on your smartphone to narrow down the product candidates.

Explanation of material icons

AL Aluminum	NA Nickle base alloys
AS Alloy steels	BS Brass
CS Carbon steels	BC Brass castings
TS Tool steels	PB Bronze
CI Cast irons	AA Aluminum alloy castings
CA Cast steels	ZA Zinc alloy castings
SS Stainless steels	MA Magnesium alloy die castings
TI Titanium alloys	TR Thermal refined steels

Explanation of icons

HSS High speed steel	 For blind hole with through coolant hole	 Spiral pointed tap through hole use
HSS-Co High speed steel (Cobalt HSS)	 For through hole with radial coolant hole	 Hand tap through hole use
HSS-P Powder HSS	 For left hand thread	 Hand tap blind hole use
HF Ultra micro grain cemented carbide	 For synchronized feeding	 Spiral fluted tap through hole use
Alloy steel Alloy steel	 Number of threads on chamfer	 Spiral fluted tap blind hole use
OX Oxidizing	 Center drills left hand cut	 Low spiral fluted tap blind hole use
NI Nitriding	 Cutting length	 Low spiral fluted tap blind hole use specially for horizontal tapping
NX Nitriding/Oxidizing		 Specification Tapping Speeds
Coating Coated		

**DON'T SEE IT?
GIVE US A CALL!
847.593.6000**

YAMAWA BY PIONEER

LINEUP

"Reliable screw threads" is
YAMAWA's theme.

SPIRAL FLUTED TAPS

Z-PRO	DIN Length	VUSP	CS	AS	SS	TS	CI	AL	AA	9
Z-PRO	DIN Length	VUSP CH	CS	AS	SS	TS	CI	AL	AA	11
	ANSI Length	ZELX SS SP	CS	AS	SS					12
	ANSI Length	ZELX TI SP				TI				17
	ANSI Length	ZELX NI SP	CS	SS	NA					20
	ANSI Length	ZELX TI LHSP				TI				23
Z-PRO	DIN Length	HSVP	CS	TR	AS	SS	CA			25
	DIN Length	PM-SP	CS	TR						27
	DIN Length	AL-SP	BS	BC	PB	AL	AA	MA	ZA	28
	ANSI Length	ISP	CS							30
	DIN Length	SP	CS							31
	DIN Length	SP OX	CS							37
	DIN Length	SP (FOR ALLOY)	AS	CS						42

SPIRAL POINTED TAPS

Z-PRO	DIN Length	VUPO	CS	AS	SS	TS	CI	AL	AA	44
	ANSI Length	ZELX SS PO	CS	AS	SS					46
	ANSI Length	ZELX NI PO	CS	SS	NA					50
	ANSI Length	PM-PO	CS	TR						53
	DIN Length	AL-PO	BS	BC	PB	AL	AA	MA	ZA	55
	DIN Length	PO	CS							57
	DIN Length	PO OX	CS							62

HAND TAPS

	ANSI Length	ZELX MOLD	TR	TS						68
	DIN Length	HT	CS							69

ROLL TAPS

Z-PRO	DIN Length	MHRZ	CS	AS	TR					79
	DIN Length	HP-RZ	CS	AS	TR	SS	AA			81

SPECIAL THREAD TAPS

	ANSI Length	ZELX NI SP STI	CS	SS	NA					85
	ANSI Length	ZELX NI PO STI	CS	SS	NA					87
	DIN Length	PO STI	BS	BC	PB	AL	AA	MA	ZA	89
	DIN Length	PO OX STI	CS							91

YAMAWA BY PIONEER

LINEUP

SPIRAL FLUTED TAPS

**DON'T SEE IT?
GIVE US A CALL!
847.593.6000**



- VUSP
- VUSP CH
- ZELX SS SP
- ZELX TI SP
- ZELX NI SP
- ZELX TI LHSP
- HSVP
- PM-SP
- AL-SP
- ISP
- SP
- SP OX
- SP (FOR ALLOY)

CHICAGO INVENTORY 8

Overall length	Thread length	Thread + Neck length	Shank length	Shank dia.	Size of square	Length of square
L	ℓ	ℓn	ℓs	Ds	K	ℓk

Spiral Fluted Tap Series for blind hole

Z-PRO DIN Length VUSP



Z-PRO
Coated Spiral Fluted Taps

Specification

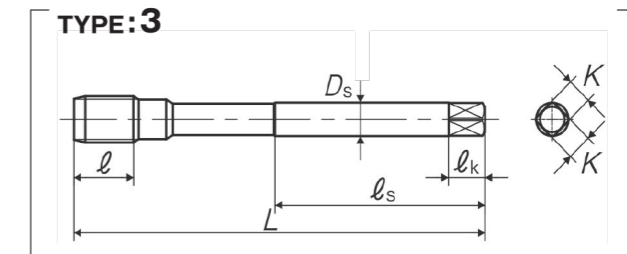
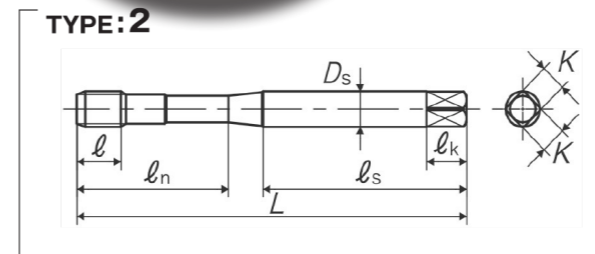
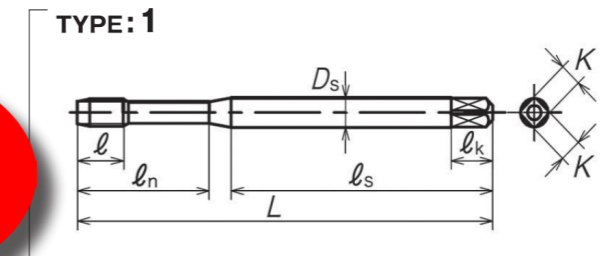


- Durability is improved by premium powder HSS and special coating.
- Chip ejection efficiency is improved and cutting resistance is reduced by the unique cutting edge shape, achieving a good internal thread and long tool life.

Tapping Speeds depending on Materials

Low carbon steels 低炭素鋼	Medium carbon steels 中炭素鋼	High carbon steels 高炭素鋼	Alloy steels 合金鋼	Stainless steels ステンレス鋼	Tool steels 工具鋼	Ductile cast irons 強靱铸铁
10~20 (m/min)	10~30 (m/min)	10~30 (m/min)	10~20 (m/min)	3~10 (m/min)	5~10 (m/min)	10~30 (m/min)
Wrought aluminum アルミ圧延材	Aluminum alloy castings アルミ合金鋳物					
10~30 (m/min)	10~35 (m/min)					

**DON'T SEE IT?
GIVE US A CALL!
847.593.6000**



Segment: 1D

Size	Class	Code	Chamfer	L (inch)	ℓ (inch)	ℓn (inch)	ℓs (inch)	Ds (inch)	K (inch)	ℓk (inch)	No. of flutes	TYPE
For Metric Threads												
M3 × 0.5	D4	5101101035	2.5P	2.205	0.197	0.736	1.339	0.141	0.11	0.187	3	1
M3 × 0.35	D4	5101101036	2.5P	2.205	0.197	0.736	1.339	0.141	0.11	0.187	3	1
M4 × 0.7	D5	5101101042	2.5P	2.48	0.276	0.815	1.535	0.168	0.131	0.25	3	1
M4 × 0.5	D4	5101101043	2.5P	2.48	0.197	0.815	1.535	0.168	0.131	0.25	3	1
M5 × 0.8	D5	5101101049	2.5P	2.756	0.354	0.984	1.654	0.194	0.152	0.25	3	1
M5 × 0.5	D4	5101101051	2.5P	2.756	0.236	0.984	1.654	0.194	0.152	0.25	3	1
M6 × 1	D6	5101101055	2.5P	3.15	0.433	1.181	1.713	0.255	0.191	0.312	3	1
M6 × 0.75	D6	5101101056	2.5P	3.15	0.315	1.181	1.713	0.255	0.191	0.312	3	1
M6 × 0.5	D4	5101101057	2.5P	3.15	0.315	1.181	1.713	0.255	0.191	0.312	3	1
M8 × 1.25	D7	5101101064	2.5P	3.543	0.472	1.378	1.831	0.318	0.238	0.375	3	2
M8 × 1	D6	5101101065	2.5P	3.543	0.472	1.378	1.831	0.318	0.238	0.375	3	2
M10 × 1.5	D8	5101101078	2.5P	3.937	0.512	1.535	2.126	0.381	0.286	0.437	3	2
M10 × 1.25	D6	5101101079	2.5P	3.937	0.512	1.535	2.126	0.381	0.286	0.437	3	2
M10 × 1	D6	5101101080	2.5P	3.937	0.512	1.535	2.126	0.381	0.286	0.437	3	2
M12 × 1.75	D8	5101101088	2.5P	4.331	0.591	-	2.205	0.367	0.275	0.437	3	3
M12 × 1.5	D7	5101101089	2.5P	4.331	0.591	-	2.205	0.367	0.275	0.437	3	3

ANSI

Chicago Supplemental Inventory. Don't see it? Give us a call! 847.593.6000 | sales@pioneerNA.com

Think threads with
YAMAWA

CHICAGO INVENTORY 9

This product is different from JIS products in shape and dimensions, please be careful when using.

Overall length	Thread length	Thread + Neck length	Shank length	Shank dia.	Size of square	Length of square
L	ℓ	ℓn	ℓs	Ds	K	ℓk

Size	Class	Code	Chamfer	L (inch)	ℓ (inch)	ℓn (inch)	ℓs (inch)	Ds (inch)	K (inch)	ℓk (inch)	No. of flutes	TYPE
M12 × 1.25	D7	5101101090	2.5P	4.331	0.591	-	2.205	0.367	0.275	0.437	3	3
M14 × 2	D9	5101101100	2.5P	4.331	0.709	-	2.205	0.429	0.322	0.5	3	3
M14 × 1.5	D8	5101101102	2.5P	4.331	0.551	-	2.205	0.429	0.322	0.5	3	3
M16 × 2	D9	5101101114	2.5P	4.331	0.709	-	2.205	0.48	0.36	0.562	3	3
M16 × 1.5	D8	5101101116	2.5P	4.331	0.551	-	2.205	0.48	0.36	0.562	3	3
M18 × 2.5	D9	5101101128	2.5P	4.921	0.787	-	2.52	0.542	0.406	0.625	4	3
M18 × 1.5	D8	5101101130	2.5P	4.921	0.551	-	2.52	0.542	0.406	0.625	3	3
M20 × 2.5	D9	5101101141	2.5P	5.512	0.787	-	2.795	0.652	0.489	0.687	4	3
M20 × 1.5	D8	5101101144	2.5P	5.512	0.551	-	2.795	0.652	0.489	0.687	3	3
M22 × 2.5	D9	5101101156	2.5P	5.512	0.787	-	2.795	0.697	0.523	0.75	4	3
M22 × 1.5	D8	5101101158	2.5P	5.512	0.551	-	2.795	0.697	0.523	0.75	3	3
M24 × 3	D10	5101101167	2.5P	6.299	0.984	-	3.228	0.76	0.57	0.75	4	3
M24 × 1.5	D8	5101101170	2.5P	6.299	0.709	-	3.228	0.76	0.57	0.75	3	3
For Unified Threads												
No.5-40UNC	GH2	5101103021	2.5P	2.205	0.197	0.736	1.339	0.141	0.11	0.187	2	1
No.5-44UNF	GH2	5101103022	2.5P	2.205	0.197	0.736	1.339	0.141	0.11	0.187	2	1
No.6-32UNC	GH2	5101103023	2.5P	2.205	0.276	0.748	1.339	0.141	0.11	0.187	2	1
No.6-40UNF	GH2	5101103024	2.5P	2.205	0.276	0.748	1.339	0.141	0.11	0.187	2	1
No.8-32UNC	GH3	5101103029	2.5P	2.48	0.276	0.827	1.535	0.168	0.131	0.25	2	1
No.8-36UNF	GH3	5101103030	2.5P	2.48	0.276	0.827	1.535	0.168	0.131	0.25	2	1
No.10-24UNC	GH3	5101103039	2.5P	2.756	0.354	0.945	1.654	0.194	0.152	0.25	2	1
No.10-32UNF	GH3	5101103041	2.5P	2.756	0.354	0.945	1.654	0.194	0.152	0.25	2	1
No.12-24UNC	GH3	5101103047	2.5P	3.15	0.354	0.984	1.953	0.22	0.165	0.281	2	1
No.12-28UNF	GH3	5101103048	2.5P	3.15	0.354	0.984	1.953	0.22	0.165	0.281	2	1
1/4-20UNC	GH3	5101103058	2.5P	3.15	0.433	1.181	1.713	0.255	0.191	0.312	2	1
1/4-20UNC	GH5	5101303058	2.5P	3.15	0.433	1.181	1.713	0.255	0.191	0.312	2	1
1/4-28UNF	GH3	5101103062	2.5P	3.15	0.433	1.181	1.713	0.255	0.191	0.312	2	1
1/4-28UNF	GH5	5101303062	2.5P	3.15	0.433	1.181	1.713	0.255	0.191	0.312	2	1
5/16-18UNC	GH5	5101103071	2.5P	3.543	0.472	1.378	1.831	0.318	0.238	0.375	3	2
3/8-16UNC	GH5	5101103082	2.5P	3.937	0.512	1.535	2.028	0.381	0.286	0.437	3	2
7/16-14UNC	GH5	5101103098	2.5P	3.937	0.512	-	2.008	0.323	0.242	0.406	3	3
1/2-13UNC	GH5	5101103111	2.5P	4.331	0.591	-	2.205	0.367	0.275	0.437	3	3
9/16-12UNC	GH5	5101103126	2.5P	4.331	0.709	-	2.205	0.429	0.322	0.5	3	3
5/8-11UNC	GH5	5101103138	2.5P	4.331	0.709	-	2.205	0.48	0.36	0.562	3	3

Overall length	Thread length	Thread + Neck length	Shank length	Shank dia.	Size of square	Length of square
L	ℓ	ℓn	ℓs	Ds	K	ℓk

Z-PRO DIN Length



VUSP CH
Z-PRO
Coated Spiral Fluted Taps with Coolant Through Hole

Specification

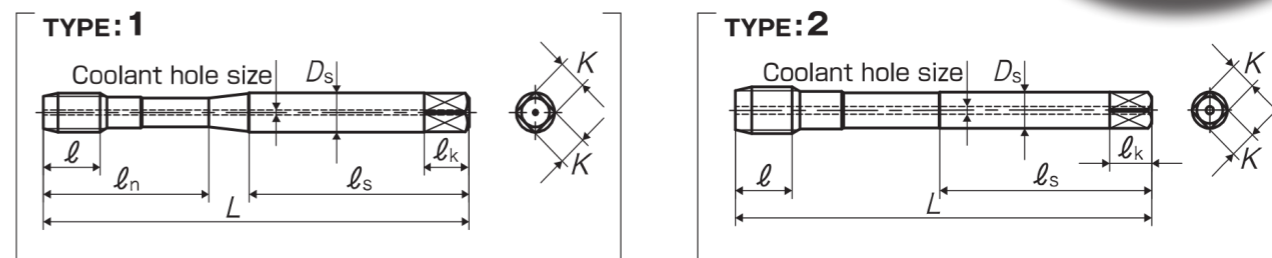


- Durability is improved by premium powder HSS and special coating.
- Chip ejection efficiency is improved and cutting resistance is reduced by the unique cutting edge shape, achieving a good internal thread and long tool life.

Tapping Speeds depending on Materials

Low carbon steels 低炭素鋼 10~20 (m/min)	Medium carbon steels 中炭素鋼 10~30 (m/min)	High carbon steels 高炭素鋼 10~30 (m/min)	Alloy steels 合金鋼 10~20 (m/min)	Stainless steels ステンレス鋼 3~10 (m/min)	Tool steels 工具鋼 5~10 (m/min)	Ductile cast irons 強靱鑄鉄 10~20 (m/min)
Wrought aluminum アルミ圧延材 10~20 (m/min)	Aluminum alloy castings アルミ合金鋳物 10~20 (m/min)					

**DON'T SEE IT?
GIVE US A CALL!
847.593.6000**



Segment : 1D

Size	Class	Code	Chamfer	L (inch)	ℓ (inch)	ℓn (inch)	ℓs (inch)	Ds (inch)	K (inch)	ℓk (inch)	No. of flutes	Coolant hole size (inch)	TYPE
For Unified Threads													
5/16-18UNC	GH5	5201103071	2.5P	3.543	0.472	1.378	1.831	0.318	0.238	0.375	3	0.039	1
3/8-16UNC	GH5	5201103082	2.5P	3.937	0.512	1.535	2.028	0.381	0.286	0.437	3	0.059	1
1/2-13UNC	GH5	5201103111	2.5P	4.331	0.591	-	2.205	0.367	0.275	0.437	3	0.079	2

ANSI

Chicago Supplemental Inventory. Don't see it? Give us a call! 847.593.6000 | sales@pioneerNA.com

Chicago Supplemental Inventory. Don't see it? Give us a call! 847.593.6000 | sales@pioneerNA.com

Overall length	Thread length	Thread + Neck length	Shank dia.	Size of square	Length of square
L	ℓ	ℓ _n	D _s	K	ℓ _k

ZELX SS SP Spiral Fluted Taps for Stainless Steels

Size	Class	Code	Chamfer	L (inch)	ℓ (inch)	ℓ _n (inch)	D _s (inch)	K (inch)	ℓ _k (inch)	No. of flutes	TYPE
7/8-9UNC	GH4	Y84695	2.5P	4.687	0.827	-	0.697	0.523	0.75	4	4
7/8-14UNF	GH4	Y84696	2.5P	4.687	0.709	-	0.697	0.523	0.75	4	4
7/8-14UNF	GH6	Y84694	2.5P	4.687	0.709	-	0.697	0.523	0.75	4	4
1 -8UNC	GH4	Y84697	2.5P	5.125	0.984	-	0.8	0.6	0.812	4	4
1 -12UNF	GH4	Y84668	2.5P	5.125	0.709	-	0.8	0.6	0.812	4	4
1 1/8-7UNC	GH6	Y84701	2.5P	5.437	1.181	-	0.896	0.672	0.875	4	4
1 1/8-12UNF	GH5	Y84702	2.5P	5.437	0.787	-	0.896	0.672	0.875	4	4
1 1/4-7UNC	GH6	Y84703	2.5P	5.75	1.181	-	1.021	0.766	1	4	4
1 1/4-12UNF	GH5	Y84705	2.5P	5.75	0.787	-	1.021	0.766	1	4	4
1 3/8-6UNC	GH6	Y84706	2.5P	6.062	1.575	-	1.108	0.831	1.062	4	4
1 3/8-12UNF	GH5	Y84707	2.5P	6.062	0.787	-	1.108	0.831	1.062	4	4
1 1/2-6UNC	GH6	Y84709	2.5P	6.375	1.575	-	1.233	0.925	1.125	4	4
1 1/2-12UNF	GH5	Y84711	2.5P	6.375	0.787	-	1.233	0.925	1.125	4	4
1 3/4-5UNC	GH7	Y84714	2.5P	7	1.772	-	1.43	1.072	1.25	4	4
2 -4 1/2UNC	GH7	Y84715	2.5P	7.625	1.969	-	1.644	1.233	1.375	4	4

Overall length	Thread length	Thread + Neck length	Shank dia.	Size of square	Length of square
L	ℓ	ℓ _n	D _s	K	ℓ _k

ANSI Length

ZELX TI SP



Spiral Fluted Taps for Titanium Alloys

Specification

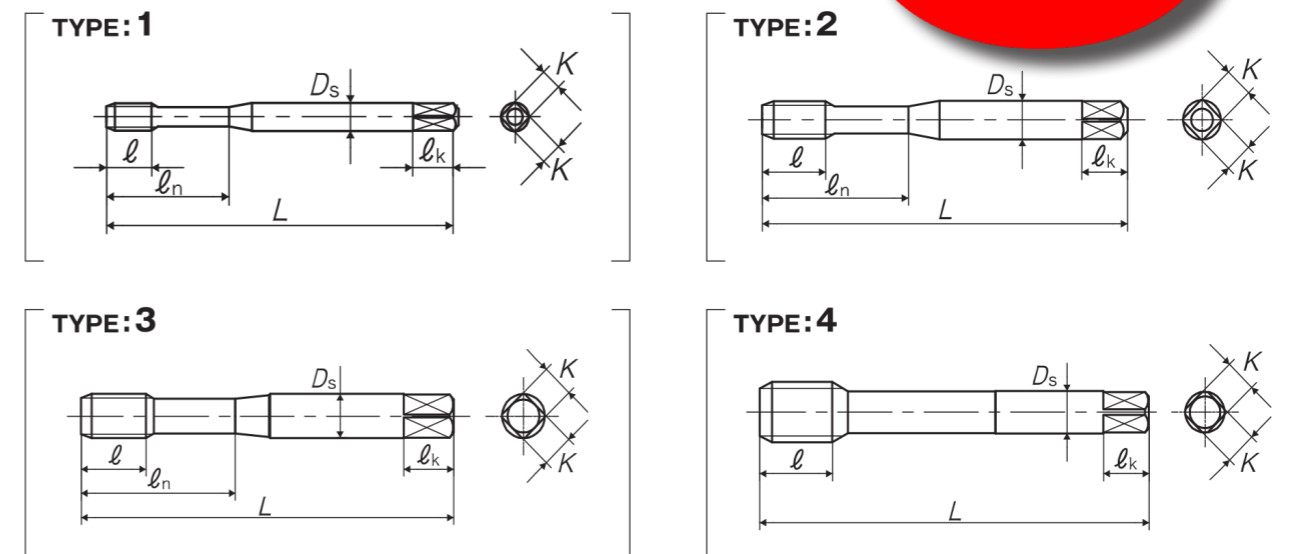


Spiral fluted tap suitable for titanium alloys which, including titanium as the main composition, are tough, light and heat resistant.

Tapping Speed depending on Materials

Titanium alloys
チタン合金
5~10
(m/min)

**DON'T SEE IT?
GIVE US A CALL!
847.593.6000**



Segment: 1D

Size	Class	Code	Chamfer	L (inch)	ℓ (inch)	ℓ _n (inch)	D _s (inch)	K (inch)	ℓ _k (inch)	No. of flutes	TYPE
For Metric threads											
M2.5 × 0.45	D3	Y87700	3P	1.812	0.157	0.5	0.141	0.11	0.187	3	1
M3 × 0.5	D3	Y87701	3P	1.937	0.197	0.625	0.141	0.11	0.187	3	1
M3.5 × 0.6	D4	Y87702	3P	2	0.276	0.687	0.141	0.11	0.187	3	1
M4 × 0.7	D4	Y87703	3P	2.125	0.276	0.75	0.168	0.131	0.25	3	1
M5 × 0.8	D4	Y87704	3P	2.375	0.354	0.875	0.194	0.152	0.25	3	1
M6 × 1	D5	Y87705	3P	2.5	0.433	1	0.255	0.191	0.312	3	2
M7 × 1	D5	Y87706	3P	2.718	0.433	1.125	0.318	0.238	0.375	3	3
M8 × 1.25	D5	Y87708	3P	2.718	0.472	1.125	0.318	0.238	0.375	3	3
M8 × 1	D5	Y87707	3P	2.718	0.472	1.125	0.318	0.238	0.375	3	3
M10 × 1.5	D6	Y87710	3P	2.937	0.512	1.25	0.381	0.286	0.437	3	3
M10 × 1.25	D5	Y87709	3P	2.937	0.472	1.25	0.381	0.286	0.437	3	3
M12 × 1.75	D6	Y87712	3P	3.375	0.591	-	0.367	0.275	0.437	3	4
M12 × 1.25	D5	Y87711	3P	3.375	0.551	-	0.367	0.275	0.437	3	4

ANSI

Chicago Supplemental Inventory. Don't see it? Give us a call! 847.593.6000 | sales@pioneerNA.com

Chicago Supplemental Inventory. Don't see it? Give us a call! 847.593.6000 | sales@pioneerNA.com

Table with 6 columns: Overall length (L), Thread length (l), Thread + Neck length (ln), Shank dia. (Ds), Size of square (K), Length of square (lk)

ZELX NI SP Spiral Fluted Taps for Nickel Base Alloys

Main table listing specifications for ZELX NI SP taps, including size, class, code, chamfer, and various length and diameter dimensions.

Table with 6 columns: Overall length (L), Thread length (l), Thread + Neck length (ln), Shank dia. (Ds), Size of square (K), Length of square (lk)

ANSI Length

ZELX TI LHSP

Spiral Fluted Taps for Titanium Alloys, Through Hole Use (with LH Spiral Flutes)



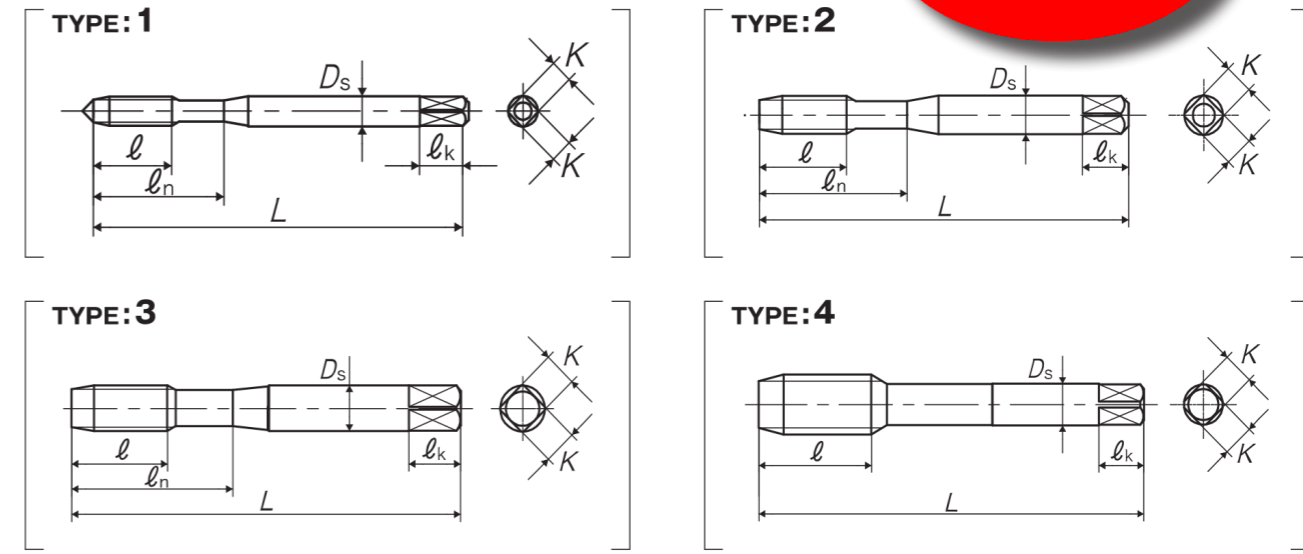
Specification

Icons for HSS-P, NI Nitride, and Synchro nized.

■ Suitable for titanium alloys which, including titanium as the main composition, are tough, light and heat resistant.

Tapping Speed depending on Materials

Titanium alloys チタン合金 5~10 (m/min)



Segment : 1T

Table listing specifications for ZELX TI LHSP taps, including size, class, code, chamfer, and various length and diameter dimensions for both Metric and Unified threads.

ANSI

Spiral Fluted Tap Series for blind hole

Overall length	Thread length	Thread + Neck length	Shank length	Shank dia.	Size of square	Length of square
L	ℓ	ℓ _n	ℓ _s	D _s	K	ℓ _k

ANSI

ANSI Length

ISP

Spiral Fluted Taps for General Purpose



Specification

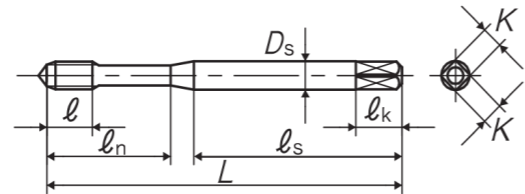


■ Suitable for low speed tapping of steels.
For manual use and drilling machine use.

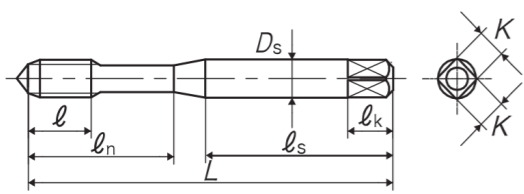
Tapping Speed depending on Materials

Low carbon steels
低碳素鋼
~5 (m/min)

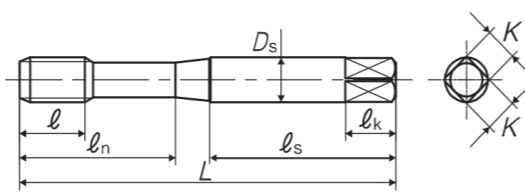
TYPE: 1



TYPE: 2



TYPE: 3



Segment : 1C

Size	Class	Code	Chamfer	L (inch)	ℓ (inch)	ℓ _n (inch)	ℓ _s (inch)	D _s (inch)	K (inch)	ℓ _k (inch)	No. of flutes	TYPE
For Unified Threads												
No.6-32UNC	-	UAUN6JXHEX	2.5P	2	0.374	0.669	1.201	0.141	0.11	0.187	3	1
No.8-32UNC	-	UAUN8JXHEX	2.5P	2.125	0.374	0.866	1.339	0.168	0.131	0.25	3	1
No.10-24UNC	-	UAUNAMXHEX	2.5P	2.375	0.512	0.866	1.339	0.194	0.152	0.25	3	1
1/4-20UNC	-	UAU04NXHEX	2.5P	2.5	0.591	1.024	1.22	0.255	0.191	0.312	3	2
5/16-18UNC	-	UAU05OXHEX	2.5P	2.718	0.669	1.004	1.378	0.318	0.238	0.375	3	3
3/8-16UNC	-	UAU06PXHEX	2.5P	2.937	0.748	1.059	1.496	0.381	0.286	0.437	3	3
For Unified Threads (In blister package)												
No.6-32UNC	-	UAUN6JXHEXR	2.5P	2	0.374	0.669	1.201	0.141	0.11	0.187	3	1
No.8-32UNC	-	UAUN8JXHEXR	2.5P	2.125	0.374	0.866	1.339	0.168	0.131	0.25	3	1
No.10-24UNC	-	UAUNAMXHEXR	2.5P	2.375	0.512	0.866	1.339	0.194	0.152	0.25	3	1
1/4-20UNC	-	UAU04NXHEXR	2.5P	2.5	0.591	1.024	1.22	0.255	0.191	0.312	3	2
5/16-18UNC	-	UAU05OXHEXR	2.5P	2.718	0.669	1.004	1.378	0.318	0.238	0.375	3	3
3/8-16UNC	-	UAU06PXHEXR	2.5P	2.937	0.748	1.059	1.496	0.381	0.286	0.437	3	3

Blister Package



Spiral Fluted Tap Series for blind hole

Overall length	Thread length	Thread + Neck length	Shank length	Shank dia.	Size of square	Length of square
L	ℓ	ℓ _n	ℓ _s	D _s	K	ℓ _k

DIN Length

SP

Spiral Fluted Taps



Specification



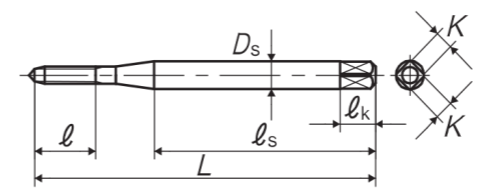
■ Spiral flutes continuously curl the chips and discharge them back toward the shank of the tap. Spiral flute taps are the most suitable for blind hole processing.

Tapping Speed depending on Materials

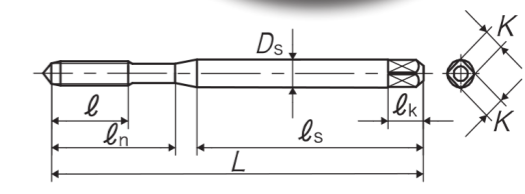
Medium carbon steels
中炭素鋼
5~10 (m/min)

High carbon steels
高炭素鋼
5~10 (m/min)

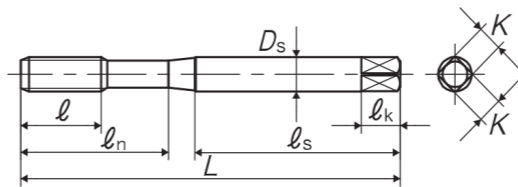
TYPE: 1



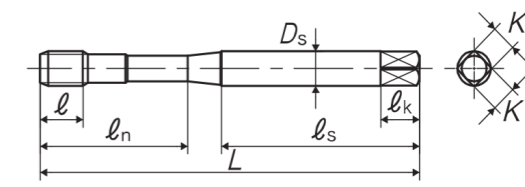
TYPE: 2



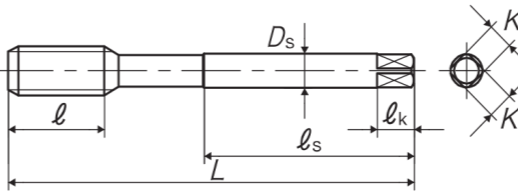
TYPE: 3



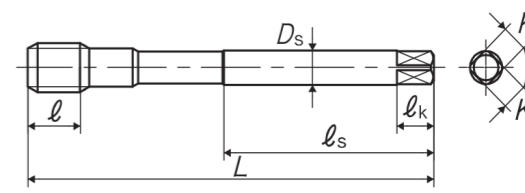
TYPE: 4



TYPE: 5



TYPE: 6



Segment : 1C

Size	Class	Code	Chamfer	L (inch)	ℓ (inch)	ℓ _n (inch)	ℓ _s (inch)	D _s (inch)	K (inch)	ℓ _k (inch)	No. of flutes	TYPE
For Metric Threads												
M2 × 0.4	D3	SS2.0E3NEB	2.5P	1.772	0.314	-	1.161	0.141	0.11	0.187	2	1
M2.2 × 0.45	D3	SS2.2F3NEB	2.5P	1.772	0.314	-	1.161	0.141	0.11	0.187	2	1
M2.5 × 0.45	D3	SS2.5F3NEB	2.5P	2.205	0.354	0.693	1.28	0.141	0.11	0.187	2	2
M2.6 × 0.45	D3	SS2.6F3NEB	2.5P	2.205	0.354	0.709	1.28	0.141	0.11	0.187	2	2
M3 × 0.5	D3	SS3.0G3NEB	2.5P	2.205	0.433	0.736	1.339	0.141	0.11	0.187	3	2
M3.5 × 0.6	D4	SS3.5H4NEB	2.5P	2.205	0.433	0.748	1.339	0.141	0.11	0.187	3	2

DON'T SEE IT?
GIVE US A CALL!
847.593.6000

DON'T SEE IT?
GIVE US A CALL!
847.593.6000

ANSI

Chicago Supplemental Inventory. Don't see it? Give us a call! 847.593.6000 | sales@pioneerNA.com

Spiral Fluted Tap Series for blind hole

Overall length	Thread length	Thread + Neck length	Shank length	Shank dia.	Size of square	Length of square
L	ℓ	ℓn	ℓs	Ds	K	ℓk

SP Spiral Fluted Taps

Size	Class	Code	Chamfer	L (inch)	ℓ (inch)	ℓn (inch)	ℓs (inch)	Ds (inch)	K (inch)	ℓk (inch)	No. of flutes	TYPE
1 -12UNF	GH6	SSU16S6NEB	2.5P	6.299	1.457	-	3.228	0.8	0.6	0.812	4	5
1 1/8-7UNC	GH4	SSU18Y4NEB	2.5P	7.087	1.732	-	3.622	0.896	0.672	0.875	4	5
1 1/8-7UNC	GH6	SSU18Y6NEB	2.5P	7.087	1.732	-	3.622	0.896	0.672	0.875	4	5
1 1/8-12UNF	GH4	SSU18S4NEB	2.5P	7.087	1.732	-	3.622	0.896	0.672	0.875	4	5
1 1/8-12UNF	GH5	SSU18S5NEB	2.5P	7.087	1.732	-	3.622	0.896	0.672	0.875	4	5
1 1/4-7UNC	GH4	SSU20Y4NEB	2.5P	7.087	1.929	-	3.622	1.021	0.766	1	4	5
1 1/4-7UNC	GH6	SSU20Y6NEB	2.5P	7.087	1.929	-	3.622	1.021	0.766	1	4	5
1 1/4-12UNF	GH4	SSU20S4NEB	2.5P	7.087	1.929	-	3.622	1.021	0.766	1	4	5
1 1/4-12UNF	GH5	SSU20S5NEB	2.5P	7.087	1.929	-	3.622	1.021	0.766	1	4	5
1 3/8-6UNC	GH5	SSU22Z5NEB	2.5P	7.874	2.165	-	4.016	1.108	0.831	1.062	4	5
1 3/8-6UNC	GH6	SSU22Z6NEB	2.5P	7.874	2.165	-	4.016	1.108	0.831	1.062	4	5
1 3/8-12UNF	GH4	SSU22S4NEB	2.5P	7.874	2.165	-	4.016	1.108	0.831	1.062	4	5
1 3/8-12UNF	GH5	SSU22S5NEB	2.5P	7.874	2.165	-	4.016	1.108	0.831	1.062	4	5
1 1/2-6UNC	GH5	SSU24Z5NEB	2.5P	7.874	2.323	-	4.016	1.233	0.925	1.125	4	5
1 1/2-6UNC	GH6	SSU24Z6NEB	2.5P	7.874	2.323	-	4.016	1.233	0.925	1.125	4	5
1 1/2-12UNF	GH4	SSU24S4NEB	2.5P	7.874	2.323	-	4.016	1.233	0.925	1.125	4	5
1 1/2-12UNF	GH5	SSU24S5NEB	2.5P	7.874	2.323	-	4.016	1.233	0.925	1.125	4	5

Spiral Fluted Tap Series for blind hole

Overall length	Thread length	Thread + Neck length	Shank length	Shank dia.	Size of square	Length of square
L	ℓ	ℓn	ℓs	Ds	K	ℓk

DIN Length

SP OX

Spiral Fluted Taps, Oxidized



**DON'T SEE IT?
GIVE US A CALL!
847.593.6000**

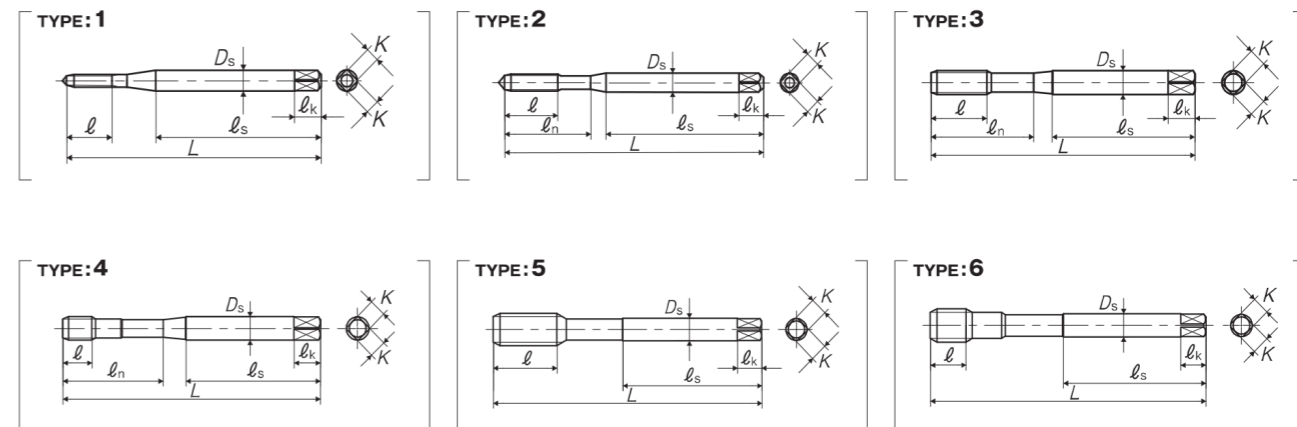
Specification



Tapping Speed depending on Materials

Low carbon steels 低碳素鋼	Medium carbon steels 中炭素鋼	High carbon steels 高炭素鋼
5~10 (m/min)	5~10 (m/min)	5~10 (m/min)

The SP OX is a spiral flute tap for blind hole tapping. These taps have an applied oxidation treatment to prevent chip welding on the surface of the taps threaded portion. They are suitable for thread processing of soft steel materials where the chips easily weld to the tap like low carbon.



Segment: 1C

Size	Class	Code	Chamfer	L (inch)	ℓ (inch)	ℓn (inch)	ℓs (inch)	Ds (inch)	K (inch)	ℓk (inch)	No. of flutes	TYPE
For Metric Threads												
M2 × 0.4	D3	SS2.0E3NEX	2.5P	1.772	0.314	-	1.161	0.141	0.11	0.187	2	1
M2.2 × 0.45	D3	SS2.2F3NEX	2.5P	1.772	0.314	-	1.161	0.141	0.11	0.187	2	1
M2.5 × 0.45	D3	SS2.5F3NEX	2.5P	2.205	0.354	0.693	1.28	0.141	0.11	0.187	2	2
M2.6 × 0.45	D3	SS2.6F3NEX	2.5P	2.205	0.354	0.709	1.28	0.141	0.11	0.187	2	2
M3 × 0.5	D3	SS3.0G3NEX	2.5P	2.205	0.433	0.736	1.339	0.141	0.11	0.187	3	2
M3.5 × 0.6	D4	SS3.5H4NEX	2.5P	2.205	0.433	0.748	1.339	0.141	0.11	0.187	3	2
M4 × 0.7	D4	SS4.0I4NEX	2.5P	2.48	0.512	0.815	1.535	0.168	0.131	0.25	3	2
M5 × 0.8	D4	SS5.0K4NEX	2.5P	2.756	0.551	0.984	1.654	0.194	0.152	0.25	3	2
M6 × 1	D5	SS6.0M5NEX	2.5P	3.15	0.591	1.181	1.713	0.255	0.191	0.312	3	2
M7 × 1	D5	SS7.0M5NEX	2.5P	3.543	0.748	1.339	1.831	0.318	0.238	0.375	3	3
M7 × 0.75	D4	SS7.0J4NEX	2.5P	3.543	0.748	1.339	1.831	0.318	0.238	0.375	3	3
M7 × 0.5	D4	SS7.0G4NEX	2.5P	3.543	0.394	1.339	1.831	0.318	0.238	0.375	3	4
M8 × 1.25	D5	SS8.0N5NEX	2.5P	3.543	0.748	1.378	1.831	0.318	0.238	0.375	3	3
M8 × 1	D5	SS8.0M5NEX	2.5P	3.543	0.748	1.378	1.831	0.318	0.238	0.375	3	3
M8 × 0.75	D4	SS8.0J4NEX	2.5P	3.543	0.748	1.378	1.831	0.318	0.238	0.375	3	4
M8 × 0.5	D4	SS8.0G4NEX	2.5P	3.543	0.394	1.378	1.831	0.318	0.238	0.375	3	4
M9 × 1.25	D5	SS9.0N5NEX	2.5P	3.937	0.906	1.535	2.028	0.381	0.286	0.437	3	3
M9 × 1	D5	SS9.0M5NEX	2.5P	3.937	0.906	1.535	2.028	0.381	0.286	0.437	3	3
M10 × 1.5	D6	SS010O6NEX	2.5P	3.937	0.906	1.535	2.126	0.381	0.286	0.437	3	3
M10 × 1.25	D5	SS010N5NEX	2.5P	3.937	0.906	1.535	2.126	0.381	0.286	0.437	3	3

ANSI

Chicago Supplemental Inventory. Don't see it? Give us a call! 847.593.6000 | sales@pioneerNA.com

Chicago Supplemental Inventory. Don't see it? Give us a call! 847.593.6000 | sales@pioneerNA.com

Spiral Fluted Tap Series for blind hole

Overall length	Thread length	Thread + Neck length	Shank length	Shank dia.	Size of square	Length of square
L	ℓ	ℓn	ℓs	Ds	K	ℓk

DIN Length

SP

Spiral Fluted Taps for Alloy Steels



Specification

HSS

OX

Oxide

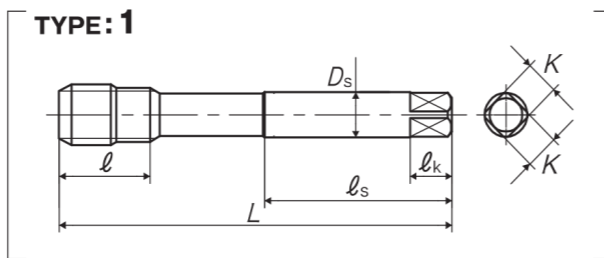


SP taps are spiral flute taps for alloy steel and high carbon steel. They have an improved chip discharge performance and are ideal for reducing tapping torque. They are also ideal for large diameter blind hole tapping.

Tapping Speed depending on Materials

Alloy steels
合金鋼
5~10
(m/min)

High carbon steels
高炭素鋼
5~10
(m/min)



**DON'T SEE IT?
GIVE US A CALL!
847.593.6000**

Segment: 1C

Size	Class	Code	Chamfer	L (inch)	ℓ (inch)	ℓn (inch)	ℓs (inch)	Ds (inch)	K (inch)	ℓk (inch)	No. of flutes	TYPE
For Unified Threads												
1 -8UNC	2BX	SSU16XYEEXJ	2.5P	6.299	1.457	-	3.228	0.8	0.6	0.812	4	1
1 1/8-8UN	2BX	SSU18XYEEXJ	2.5P	7.087	1.732	-	3.622	0.896	0.672	0.875	4	1
1 1/4-8UN	2BX	SSU20XYEEXJ	2.5P	7.087	1.929	-	3.622	1.021	0.766	1	4	1
1 3/8-8UN	2BX	SSU22XYEEXJ	2.5P	7.874	2.165	-	4.016	1.108	0.831	1.062	4	1
1 1/2-8UN	2BX	SSU24XYEEXJ	2.5P	7.874	2.323	-	4.016	1.233	0.925	1.125	4	1

ANSI

Chicago Supplemental Inventory. Don't see it? Give us a call! 847.593.6000 | sales@pioneerNA.com

YAMAWA BY PIONEER

LINEUP

SPIRAL POINTED TAPS

**DON'T SEE IT?
GIVE US A CALL!
847.593.6000**



VUPO
ZELX SS PO
ZELX NI PO
PM-PO
AL-PO
PO
PO OX



CHICAGO INVENTORY 42

This product is different from JIS products in shape and dimensions, please be careful when using.



CHICAGO INVENTORY 43

Overall length	Thread length	Thread + Neck length	Shank dia.	Size of square	Length of square
L	ℓ	ℓn	Ds	K	ℓk

ZELX NI PO Spiral Pointed Taps for Nickel Base Alloys

Size	Class	Code	Chamfer	L (inch)	ℓ (inch)	ℓn (inch)	Ds (inch)	K (inch)	ℓk (inch)	No. of flutes	TYPE
1/2-20UNF	GH5	Y85552	4.5P	3.375	0.984	-	0.367	0.275	0.437	3	4
1/2-20UNF	GH7	Y85582	4.5P	3.375	0.984	-	0.367	0.275	0.437	3	4
5/8-11UNC	GH3	Y85525	4.5P	3.812	1.083	-	0.48	0.36	0.562	3	4
5/8-11UNC	GH5	Y85555	4.5P	3.812	1.083	-	0.48	0.36	0.562	3	4
5/8-11UNC	GH7	Y85585	4.5P	3.812	1.083	-	0.48	0.36	0.562	3	4
5/8-18UNF	GH3	Y85526	4.5P	3.812	1.083	-	0.48	0.36	0.562	3	4
5/8-18UNF	GH5	Y85556	4.5P	3.812	1.083	-	0.48	0.36	0.562	3	4
5/8-18UNF	GH7	Y85586	4.5P	3.812	1.083	-	0.48	0.36	0.562	3	4
3/4-10UNC	GH3	Y85527	4.5P	4.25	1.201	-	0.59	0.442	0.687	3	4
3/4-10UNC	GH5	Y85557	4.5P	4.25	1.201	-	0.59	0.442	0.687	3	4
3/4-16UNF	GH3	Y85528	4.5P	4.25	1.201	-	0.59	0.442	0.687	3	4
3/4-16UNF	GH5	Y85558	4.5P	4.25	1.201	-	0.59	0.442	0.687	3	4

Overall length	Thread length	Thread + Neck length	Shank dia.	Size of square	Length of square
L	ℓ	ℓn	Ds	K	ℓk

ANSI Length
PM-PO



Spiral Pointed Taps for Hard-to-Machine Materials

Specification



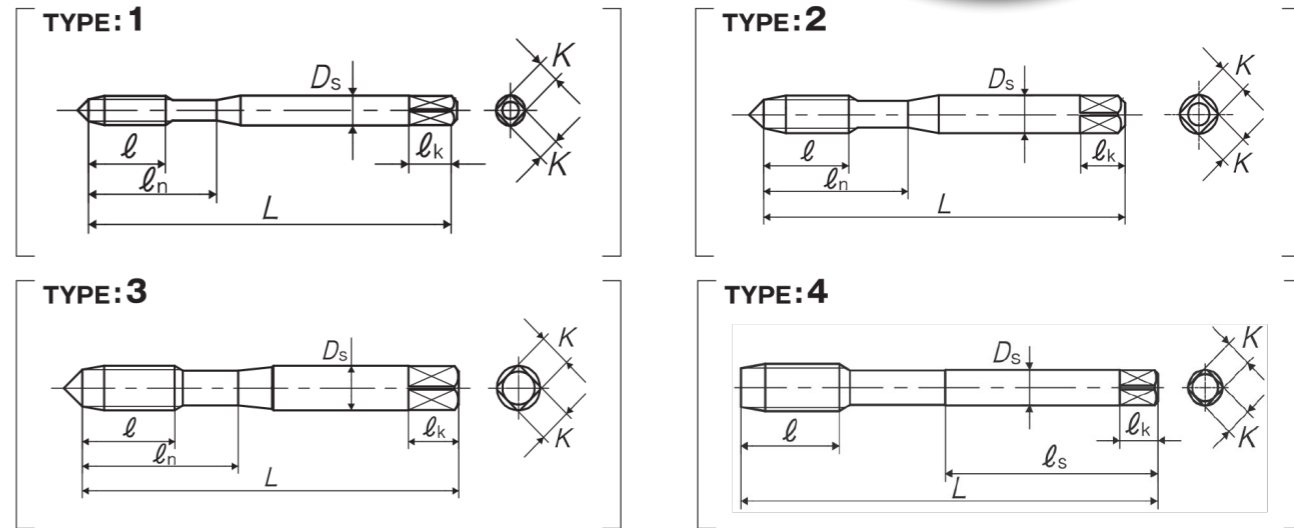
■Spiral pointed tap suitable for high hardness steels of 35~45HRC such as forgings and thermal refined steels of high carbon steels and alloy steels, and die steel. Through hole use.

Tapping Speeds depending on Materials

High carbon steels 高炭素鋼	Thermal refined steels 調質鋼	Thermal refined steels 調質鋼
5~10 (m/min)	5~10 (m/min)	~5 (m/min)
	25~35HRC	35~45HRC

**DON'T SEE IT?
GIVE US A CALL!
847.593.6000**

ANSI



Segment : 1F

Size	Class	Code	Chamfer	L (inch)	ℓ (inch)	ℓn (inch)	Ds (inch)	K (inch)	ℓk (inch)	No. of flutes	TYPE
For Metric Threads											
No.6-32UNC	GH3	PAUN6J3DPB	5.5P	2	0.413	0.687	0.141	0.11	0.187	2	1
No.6-40UNF	GH3	PAUN6H3DPB	5.5P	2	0.413	0.687	0.141	0.11	0.187	2	1
No.8-32UNC	GH3	PAUN8J3DPB	5.5P	2.125	0.453	0.75	0.168	0.131	0.25	2	1
No.8-36UNF	GH3	PAUN8I3DPB	5.5P	2.125	0.453	0.75	0.168	0.131	0.25	2	1
No.10-24UNC	GH3	PAUNAM3DPB	5.5P	2.375	0.531	0.875	0.194	0.152	0.25	2	1
No.10-32UNF	GH3	PAUNAJ3DPB	5.5P	2.375	0.531	0.875	0.194	0.152	0.25	2	1
No.12-24UNC	GH3	PAUNCM3DPB	5.5P	2.375	0.571	0.937	0.22	0.165	0.281	2	1
No.12-28UNF	GH3	PAUNCK3DPB	5.5P	2.375	0.571	0.937	0.22	0.165	0.281	2	1
1/4-20UNC	GH4	PAU04N4DPB	5.5P	2.5	0.591	1	0.255	0.191	0.312	3	2
1/4-28UNF	GH4	PAU04K4DPB	5.5P	2.5	0.591	1	0.255	0.191	0.312	3	2
5/16-18UNC	GH5	PAU05O5DPB	5.5P	2.718	0.669	1.125	0.318	0.238	0.375	3	3
5/16-24UNF	GH5	PAU05M5DPB	5.5P	2.718	0.669	1.125	0.318	0.238	0.375	3	3
3/8-16UNC	GH6	PAU06P6DPB	5.5P	2.937	0.748	1.25	0.381	0.286	0.437	3	3
3/8-24UNF	GH5	PAU06M5DPB	5.5P	2.937	0.748	1.25	0.381	0.286	0.437	3	3
7/16-14UNC	GH6	PAU07Q6DPB	5.5P	3.156	0.866	-	0.323	0.242	0.406	3	4
7/16-20UNF	GH5	PAU07N5DPB	5.5P	3.156	0.866	-	0.323	0.242	0.406	3	4
1/2-13UNC	GH6	PAU08R6DPB	5.5P	3.375	0.984	-	0.367	0.275	0.437	3	4
1/2-20UNF	GH6	PAU08N6DPB	5.5P	3.375	0.984	-	0.367	0.275	0.437	3	4

Chicago Supplemental Inventory. Don't see it? Give us a call! 847.593.6000 | sales@pioneerNA.com

Chicago Supplemental Inventory. Don't see it? Give us a call! 847.593.6000 | sales@pioneerNA.com

Overall length	Thread length	Thread + Neck length	Shank dia.	Size of square	Length of square
L	ℓ	ℓ _n	D _s	K	ℓ _k

PM-PO Spiral Pointed Taps for Hard-to-Machine Materials

Size	Class	Code	Chamfer	L (inch)	ℓ (inch)	ℓ _n (inch)	D _s (inch)	K (inch)	ℓ _k (inch)	No. of flutes	TYPE
9/16-12UNC	GH6	PAU09S6DPB	5.5P	3.593	0.984	-	0.429	0.322	0.5	3	4
9/16-18UNF	GH6	PAU09O6DPB	5.5P	3.593	0.984	-	0.429	0.322	0.5	3	4
5/8-11UNC	GH7	PAU10U7DPB	5.5P	3.812	1.083	-	0.48	0.36	0.562	3	4
5/8-18UNF	GH6	PAU10O6DPB	5.5P	3.812	1.083	-	0.48	0.36	0.562	3	4
3/4-10UNC	GH7	PAU12V7DPB	5.5P	4.25	1.201	-	0.59	0.442	0.687	3	4
3/4-16UNF	GH6	PAU12P6DPB	5.5P	4.25	1.201	-	0.59	0.442	0.687	3	4
7/8-9UNC	GH7	PAU14W7DPB	5.5P	4.687	1.339	-	0.697	0.523	0.75	3	4
7/8-14UNF	GH6	PAU14Q6DPB	5.5P	4.687	1.339	-	0.697	0.523	0.75	3	4
1 -8UNC	GH8	PAU16X8DPB	5.5P	5.125	1.496	-	0.8	0.6	0.812	3	4
1 -12UNF	GH7	PAU16S7DPB	5.5P	5.125	1.496	-	0.8	0.6	0.812	3	4

Overall length	Thread length	Thread + Neck length	Shank dia.	Size of square	Length of square
L	ℓ	ℓ _n	D _s	K	ℓ _k

DIN Length

AL-PO

Spiral Pointed Taps for Aluminum



**DON'T SEE IT?
GIVE US A CALL!
847.593.6000**

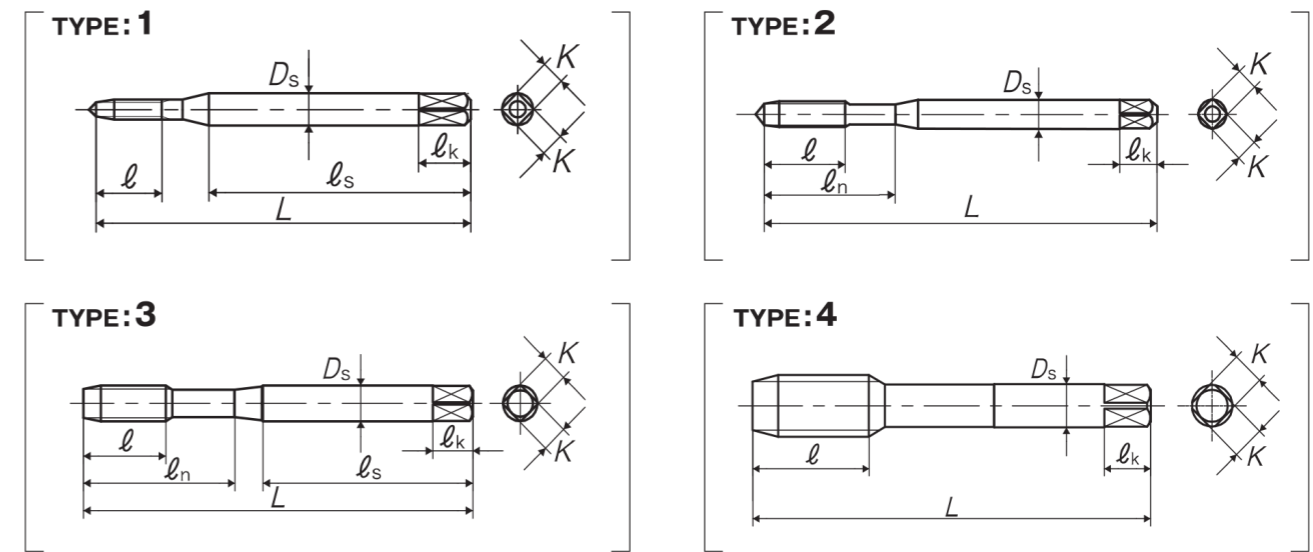
Specification



In tapping of aluminum die casting and aluminum casting, AL-PO solves chip jamming and chip clogging trouble, and eliminates torn threads.

Tapping Speed depending on Materials

Brass 黄銅	Brass castings 黄銅鑄物	Bronze 青銅	Wrought aluminum アルミ圧延材	Aluminum alloy castings アルミ合金鑄物	Magnesium alloy die castings マグネシウム合金鑄物	Zinc alloy castings 亜鉛合金鑄物
5~15 (m/min)	5~15 (m/min)	5~15 (m/min)	5~15 (m/min)	5~15 (m/min)	5~15 (m/min)	5~15 (m/min)



Segment: 1F

Size	Class	Code	Chamfer	L (inch)	ℓ (inch)	ℓ _n (inch)	D _s (inch)	K (inch)	ℓ _k (inch)	No. of flutes	TYPE
For Metric Threads											
M3 × 0.5	D3	386228M	5P	2.205	0.433	0.736	0.141	0.11	0.187	3	2
M3.5 × 0.6	D4	386229M	5P	2.205	0.433	0.748	0.141	0.11	0.187	3	2
M4 × 0.7	D4	386230M	5P	2.48	0.512	0.815	0.168	0.131	0.25	3	2
M5 × 0.8	D4	386231M	5P	2.756	0.551	0.984	0.194	0.152	0.25	3	2
M6 × 1	D5	386232M	5P	3.15	0.591	1.181	0.255	0.191	0.312	3	2
M7 × 1	D5	386233M	5P	3.543	0.748	1.339	0.318	0.238	0.375	3	3
M8 × 1.25	D5	386235M	5P	3.543	0.748	1.378	0.318	0.238	0.375	3	3
M8 × 1	D5	386234M	5P	3.543	0.748	1.378	0.318	0.238	0.375	3	3
M10 × 1.5	D6	386237M	5P	3.937	0.906	1.535	0.381	0.286	0.437	3	3
M10 × 1.25	D5	386236M	5P	3.937	0.906	1.535	0.381	0.286	0.437	3	3
M12 × 1.75	D6	386240M	5P	4.331	1.024	-	0.367	0.275	0.437	3	4
M12 × 1.5	D5	386239M	5P	4.331	1.024	-	0.367	0.275	0.437	3	4
M12 × 1.25	D5	386238M	5P	4.331	1.024	-	0.367	0.275	0.437	3	4
For Unified Threads											
No.2-56UNC	GH2	386200M	5P	1.772	0.314	-	0.141	0.11	0.187	2	1
No.4-40UNC	GH2	386201M	5P	2.205	0.354	0.709	0.141	0.11	0.187	2	2
No.5-40UNC	GH2	386202M	5P	2.205	0.433	0.736	0.141	0.11	0.187	3	2

ANSI

Chicago Supplemental Inventory. Don't see it? Give us a call! 847.593.6000 | sales@pioneerNA.com

Chicago Supplemental Inventory. Don't see it? Give us a call! 847.593.6000 | sales@pioneerNA.com

Overall length	Thread length	Thread + Neck length	Shank dia.	Size of square	Length of square
L	ℓ	ℓn	Ds	K	ℓk

Size	Class	Code	Chamfer	L (inch)	ℓ (inch)	ℓn (inch)	Ds (inch)	K (inch)	ℓk (inch)	No. of flutes	TYPE
No.6-32UNC	GH3	386203M	5P	2.205	0.433	0.748	0.141	0.11	0.187	3	2
No.8-32UNC	GH3	386204M	5P	2.48	0.512	0.827	0.168	0.131	0.25	3	2
No.10-24UNC	GH3	386205M	5P	2.756	0.551	0.945	0.194	0.152	0.25	3	2
No.10-32UNF	GH3	386206M	5P	2.756	0.551	0.945	0.194	0.152	0.25	3	2
1/4-20UNC	GH3	386207M	5P	3.15	0.591	1.181	0.255	0.191	0.312	3	2
1/4-20UNC	GH5	386208M	5P	3.15	0.591	1.181	0.255	0.191	0.312	3	2
1/4-28UNF	GH3	386209M	5P	3.15	0.591	1.181	0.255	0.191	0.312	3	2
1/4-28UNF	GH4	386211M	5P	3.15	0.591	1.181	0.255	0.191	0.312	3	2
5/16-18UNC	GH3	386212M	5P	3.543	0.748	1.378	0.318	0.238	0.375	3	3
5/16-18UNC	GH5	386213M	5P	3.543	0.748	1.378	0.318	0.238	0.375	3	3
5/16-24UNF	GH3	386214M	5P	3.543	0.748	1.378	0.318	0.238	0.375	3	3
5/16-24UNF	GH4	386215M	5P	3.543	0.748	1.378	0.318	0.238	0.375	3	3
3/8-16UNC	GH3	386216M	5P	3.937	0.906	1.535	0.381	0.286	0.437	3	3
3/8-16UNC	GH5	386217M	5P	3.937	0.906	1.535	0.381	0.286	0.437	3	3
3/8-24UNF	GH3	386218M	5P	3.937	0.906	1.535	0.381	0.286	0.437	3	3
3/8-24UNF	GH4	386219M	5P	3.937	0.906	1.535	0.381	0.286	0.437	3	3
7/16-14UNC	GH3	386220M	5P	3.937	0.906	-	0.323	0.242	0.406	3	4
7/16-14UNC	GH5	386221M	5P	3.937	0.906	-	0.323	0.242	0.406	3	4
7/16-20UNF	GH3	386222M	5P	3.937	0.906	-	0.323	0.242	0.406	3	4
7/16-20UNF	GH5	386223M	5P	3.937	0.906	-	0.323	0.242	0.406	3	4
1/2-13UNC	GH3	386224M	5P	4.331	1.024	-	0.367	0.275	0.437	3	4
1/2-13UNC	GH5	386225M	5P	4.331	1.024	-	0.367	0.275	0.437	3	4
1/2-20UNF	GH3	386226M	5P	4.331	1.024	-	0.367	0.275	0.437	3	4
1/2-20UNF	GH5	386227M	5P	4.331	1.024	-	0.367	0.275	0.437	3	4

Overall length	Thread length	Thread + Neck length	Shank length	Shank dia.	Size of square	Length of square
L	ℓ	ℓn	ℓs	Ds	K	ℓk

DIN Length

PO

Spiral Pointed Taps



**DON'T SEE IT?
GIVE US A CALL!
847.593.6000**

ANSI

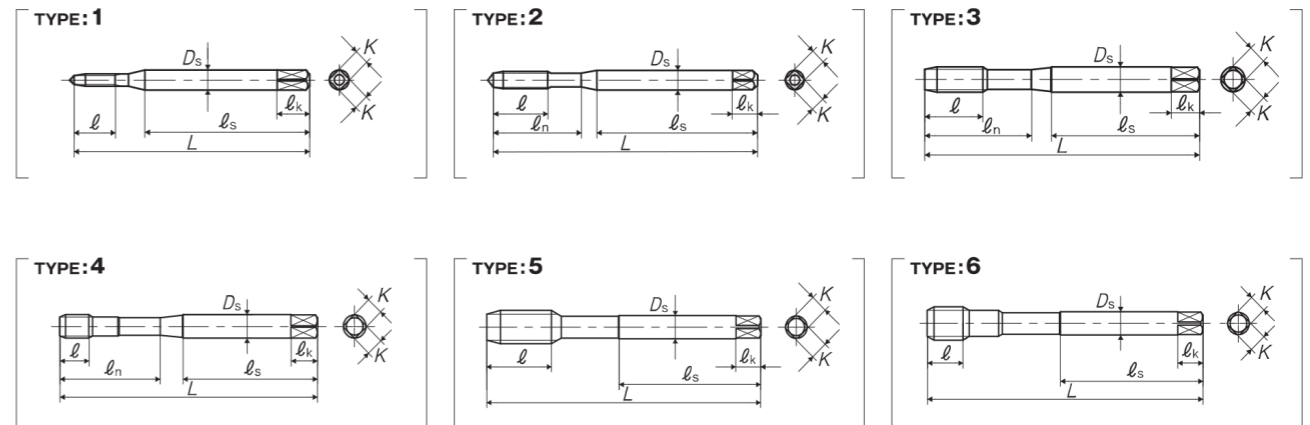
Specification



Tapping Speed depending on Materials

Medium carbon steels 中炭素鋼	High carbon steels 高炭素鋼
5~10 (m/min)	5~10 (m/min)

The PO taps push the chips forward and discharge them in the direction of tapping. These taps cut a stable thread with few problems due to chips, making them ideal for through hole machining.



Segment : 1E

Size	Class	Code	Chamfer	L (inch)	ℓ (inch)	ℓn (inch)	ℓs (inch)	Ds (inch)	K (inch)	ℓk (inch)	No. of flutes	TYPE
For Metric Threads												
M2 × 0.4	D3	PS2.0E3NEB	5P	1.772	0.314	-	1.161	0.141	0.11	0.187	3	1
M2.2 × 0.45	D3	PS2.2F3NEB	5P	1.772	0.314	-	1.161	0.141	0.11	0.187	3	1
M2.5 × 0.45	D3	PS2.5F3NEB	5P	2.205	0.354	0.693	1.28	0.141	0.11	0.187	3	2
M2.6 × 0.45	D3	PS2.6F3NEB	5P	2.205	0.354	0.709	1.28	0.141	0.11	0.187	3	2
M3 × 0.5	D3	PS3.0G3NEB	5P	2.205	0.433	0.736	1.339	0.141	0.11	0.187	3	2
M3.5 × 0.6	D4	PS3.5H4NEB	5P	2.205	0.433	0.748	1.339	0.141	0.11	0.187	3	2
M4 × 0.7	D4	PS4.0I4NEB	5P	2.48	0.512	0.815	1.535	0.168	0.131	0.25	3	2
M5 × 0.8	D4	PS5.0K4NEB	5P	2.756	0.551	0.984	1.654	0.194	0.152	0.25	3	2
M6 × 1	D5	PS6.0M5NEB	5P	3.15	0.591	1.181	1.713	0.255	0.191	0.312	3	2
M7 × 1	D5	PS7.0N5NEB	5P	3.543	0.748	1.339	1.831	0.318	0.238	0.375	3	3
M7 × 0.75	D4	PS7.0J4NEB	5P	3.543	0.748	1.339	1.831	0.318	0.238	0.375	3	3
M7 × 0.5	D4	PS7.0G4NEB	5P	3.543	0.394	1.339	1.831	0.318	0.238	0.375	3	4
M8 × 1.25	D5	PS8.0N5NEB	5P	3.543	0.748	1.378	1.831	0.318	0.238	0.375	3	3
M8 × 1	D5	PS8.0M5NEB	5P	3.543	0.748	1.378	1.831	0.318	0.238	0.375	3	3
M8 × 0.75	D4	PS8.0J4NEB	5P	3.543	0.748	1.378	1.831	0.318	0.238	0.375	3	3
M8 × 0.5	D4	PS8.0G4NEB	5P	3.543	0.394	1.378	1.831	0.318	0.238	0.375	3	4
M9 × 1.25	D5	PS9.0N5NEB	5P	3.937	0.906	1.535	2.028	0.381	0.286	0.437	3	3
M9 × 1	D5	PS9.0M5NEB	5P	3.937	0.906	1.535	2.028	0.381	0.286	0.437	3	3
M10 × 1.5	D6	PS10.0N6NEB	5P	3.937	0.906	1.535	2.126	0.381	0.286	0.437	3	3
M10 × 1.25	D5	PS10.0N5NEB	5P	3.937	0.906	1.535	2.126	0.381	0.286	0.437	3	3

Chicago Supplemental Inventory. Don't see it? Give us a call! 847.593.6000 | sales@pioneerNA.com

Chicago Supplemental Inventory. Don't see it? Give us a call! 847.593.6000 | sales@pioneerNA.com

Overall length	Thread length	Thread + Neck length	Shank length	Shank dia.	Size of square	Length of square
L	ℓ	ℓn	ℓs	Ds	K	ℓk

PO OX Spiral Pointed Taps, Oxidized

Size	Class	Code	Chamfer	L (inch)	ℓ (inch)	ℓn (inch)	ℓs (inch)	Ds (inch)	K (inch)	ℓk (inch)	No. of flutes	TYPE
5/8-18UNF	GH3	PSU1003NEX	4.5P	4.331	1.024	-	2.205	0.48	0.36	0.562	3	5
5/8-18UNF	GH4	PSU1004NEX	4.5P	4.331	1.024	-	2.205	0.48	0.36	0.562	3	5
5/8-18UNF	GH5	PSU1005NEX	4.5P	4.331	1.024	-	2.205	0.48	0.36	0.562	3	5
3/4-10UNC	GH5	PSU12V5NEX	4.5P	4.921	1.299	-	2.52	0.59	0.442	0.687	3	5
3/4-10UNC	GH6	PSU12V6NEX	4.5P	4.921	1.299	-	2.52	0.59	0.442	0.687	3	5
3/4-16UNF	GH3	PSU12P3NEX	4.5P	4.921	1.299	-	2.52	0.59	0.442	0.687	3	5
3/4-16UNF	GH4	PSU12P4NEX	4.5P	4.921	1.299	-	2.52	0.59	0.442	0.687	3	5
3/4-16UNF	GH5	PSU12P5NEX	4.5P	4.921	1.299	-	2.52	0.59	0.442	0.687	3	5
7/8-9UNC	GH4	PSU14W4NEX	4.5P	5.512	1.299	-	2.795	0.697	0.523	0.75	3	5
7/8-9UNC	GH5	PSU14W5NEX	4.5P	5.512	1.299	-	2.795	0.697	0.523	0.75	3	5
7/8-9UNC	GH6	PSU14W6NEX	4.5P	5.512	1.299	-	2.795	0.697	0.523	0.75	3	5
7/8-14UNF	GH4	PSU14Q4NEX	4.5P	5.512	1.299	-	2.795	0.697	0.523	0.75	3	5
7/8-14UNF	GH6	PSU14Q6NEX	4.5P	5.512	1.299	-	2.795	0.697	0.523	0.75	3	5
1 -8UNC	GH4	PSU16X4NEX	4.5P	6.299	1.457	-	3.228	0.8	0.6	0.812	3	5
1 -8UNC	GH5	PSU16X5NEX	4.5P	6.299	1.457	-	3.228	0.8	0.6	0.812	3	5
1 -8UNC	GH6	PSU16X6NEX	4.5P	6.299	1.457	-	3.228	0.8	0.6	0.812	3	5
1 -8UNC	GH7	PSU16X7NEX	4.5P	6.299	1.457	-	3.228	0.8	0.6	0.812	3	5
1 -12UNF	GH4	PSU16S4NEX	4.5P	6.299	1.457	-	3.228	0.8	0.6	0.812	3	5
1 -12UNF	GH5	PSU16S5NEX	4.5P	6.299	1.457	-	3.228	0.8	0.6	0.812	3	5
1 -12UNF	GH6	PSU16S6NEX	4.5P	6.299	1.457	-	3.228	0.8	0.6	0.812	3	5
1 1/8-7UNC	GH6	PSU18Y6NEX	4.5P	7.087	1.732	-	3.622	0.896	0.672	0.875	4	5
1 1/8-7UNC	GH7	PSU18Y7NEX	4.5P	7.087	1.732	-	3.622	0.896	0.672	0.875	4	5
1 1/8-12UNF	GH5	PSU18S5NEX	4.5P	7.087	1.732	-	3.622	0.896	0.672	0.875	4	5
1 1/8-12UNF	GH6	PSU18S6NEX	4.5P	7.087	1.732	-	3.622	0.896	0.672	0.875	4	5
1 1/4-7UNC	GH6	PSU20Y6NEX	4.5P	7.087	1.929	-	3.622	1.021	0.766	1	4	5
1 1/4-7UNC	GH8	PSU20Y8NEX	4.5P	7.087	1.929	-	3.622	1.021	0.766	1	4	5
1 1/4-12UNF	GH5	PSU20S5NEX	4.5P	7.087	1.929	-	3.622	1.021	0.766	1	4	5
1 1/4-12UNF	GH6	PSU20S6NEX	4.5P	7.087	1.929	-	3.622	1.021	0.766	1	4	5
1 3/8-6UNC	GH6	PSU22Z6NEX	4.5P	7.874	2.165	-	4.016	1.108	0.831	1.062	4	5
1 3/8-6UNC	GH8	PSU22Z8NEX	4.5P	7.874	2.165	-	4.016	1.108	0.831	1.062	4	5
1 3/8-12UNF	GH5	PSU22S5NEX	4.5P	7.874	2.165	-	4.016	1.108	0.831	1.062	4	5
1 3/8-12UNF	GH6	PSU22S6NEX	4.5P	7.874	2.165	-	4.016	1.108	0.831	1.062	4	5
1 1/2-6UNC	GH6	PSU24Z6NEX	4.5P	7.874	2.323	-	4.016	1.233	0.925	1.125	4	5
1 1/2-6UNC	GH8	PSU24Z8NEX	4.5P	7.874	2.323	-	4.016	1.233	0.925	1.125	4	5
1 1/2-12UNF	GH5	PSU24S5NEX	4.5P	7.874	2.323	-	4.016	1.233	0.925	1.125	4	5
1 1/2-12UNF	GH7	PSU24S7NEX	4.5P	7.874	2.323	-	4.016	1.233	0.925	1.125	4	5

**DON'T SEE IT?
GIVE US A CALL!
847.593.6000**

YAMAWA BY PIONEER
LINEUP
HAND TAPS



**ZELX MOLD
HT**

**DON'T SEE IT?
GIVE US A CALL!
847.593.6000**

Chicago Supplemental Inventory. Don't see it? Give us a call! 847.593.6000 | sales@pioneerNA.com

Hand Tap Series

Overall length	Thread length	Thread + Neck length	Shank dia.	Size of square	Length of square
L	ℓ	ℓ _n	D _s	K	ℓ _k

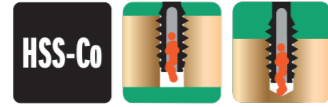
ANSI Length

ZELX MOLD

Hand Taps for Hard-to-Machine Materials



Specification

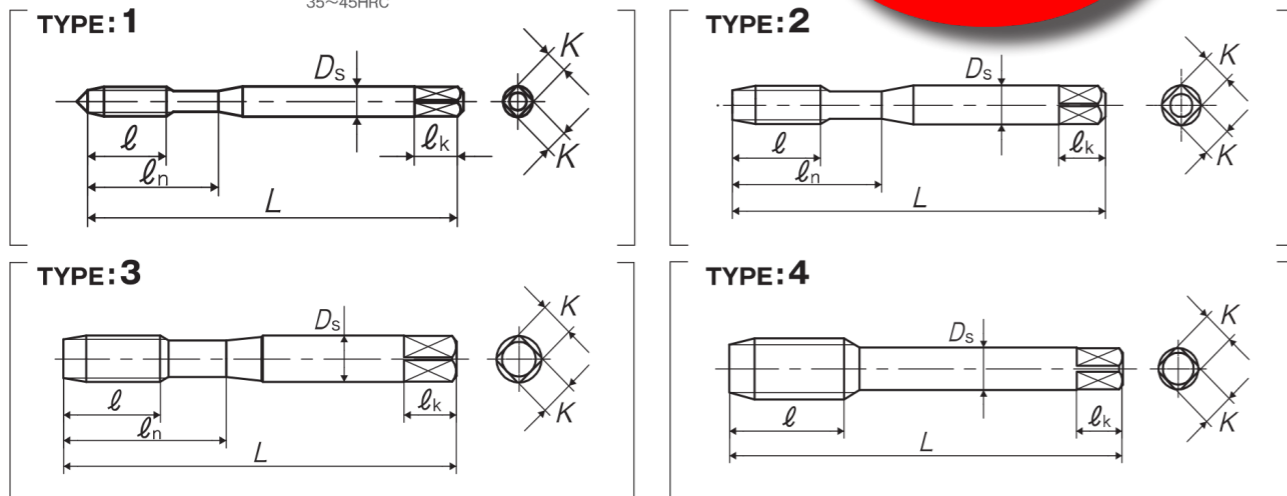


■ Suitable for hard steels of 35 ~ 45HRC, such as forgings and thermal refined steels of high carbon steels and alloy steels, and die steels.

Tapping Speed depending on Materials

Thermal refined steels 熱処理鋼	Tool steels 工具鋼
~5 (m/min)	~5 (m/min)
35~45HRC	

**DON'T SEE IT?
GIVE US A CALL!
847.593.6000**



Segment : 1B

Size	Class	Code	Chamfer	L (inch)	ℓ (inch)	ℓ _n (inch)	D _s (inch)	K (inch)	ℓ _k (inch)	No. of flutes	TYPE
For Unified Threads											
No.4-40UNC	GH2	Y89599	5P	1.875	0.335	0.562	0.141	0.11	0.187	3	1
No.5-40UNC	GH2	Y89601	5P	1.937	0.374	0.625	0.141	0.11	0.187	3	1
No.6-32UNC	GH3	Y89602	5P	2	0.413	0.687	0.141	0.11	0.187	3	1
No.8-32UNC	GH3	Y89604	5P	2.125	0.453	0.75	0.168	0.131	0.25	3	1
No.10-24UNC	GH3	Y89606	5P	2.375	0.531	0.875	0.194	0.152	0.25	3	1
No.10-32UNF	GH3	Y89607	5P	2.375	0.531	0.875	0.194	0.152	0.25	3	1
1/4-20UNC	GH3	Y89613	5P	2.5	0.591	1	0.255	0.191	0.312	3	2
1/4-28UNF	GH3	Y89614	5P	2.5	0.591	1	0.255	0.191	0.312	3	2
5/16-18UNC	GH3	Y89615	5P	2.718	0.669	1.125	0.318	0.238	0.375	4	3
5/16-24UNF	GH3	Y89616	5P	2.718	0.669	1.125	0.318	0.238	0.375	4	3
3/8-16UNC	GH3	Y89617	5P	2.937	0.748	1.25	0.381	0.286	0.437	4	3
3/8-24UNF	GH3	Y89618	5P	2.937	0.748	1.25	0.381	0.286	0.437	4	3
7/16-14UNC	GH3	Y89619	5P	3.156	0.866	-	0.323	0.242	0.406	4	4
7/16-20UNF	GH3	Y89620	5P	3.156	0.866	-	0.323	0.242	0.406	4	4
1/2-13UNC	GH3	Y89621	5P	3.375	0.984	-	0.367	0.275	0.437	4	4
1/2-20UNF	GH3	Y89622	5P	3.375	0.984	-	0.367	0.275	0.437	4	4
5/8-11UNC	GH3	Y89625	5P	3.812	1.083	-	0.48	0.36	0.562	4	4
5/8-18UNF	GH3	Y89626	5P	3.812	1.083	-	0.48	0.36	0.562	4	4
3/4-10UNC	GH3	Y89627	5P	4.25	1.201	-	0.59	0.422	0.687	4	4
3/4-16UNF	GH3	Y89628	5P	4.25	1.201	-	0.59	0.422	0.687	4	4

Hand Tap Series

Overall length	Thread length	Thread + Neck length	Shank length	Shank dia.	Size of square	Length of square
L	ℓ	ℓ _n	ℓ _s	D _s	K	ℓ _k

DIN Length

HT

Hand Taps



**DON'T SEE IT?
GIVE US A CALL!
847.593.6000**

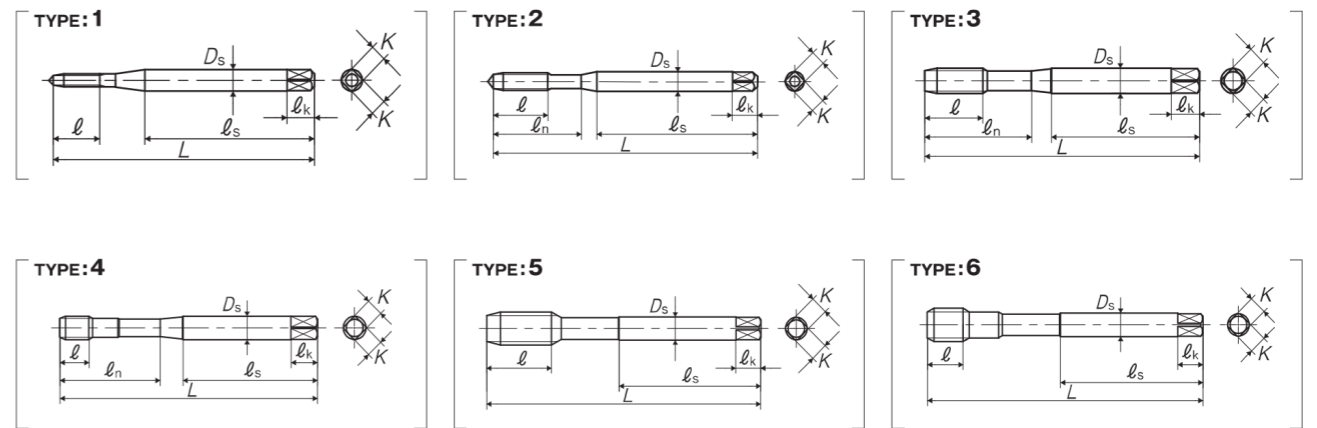
Specification



■ The HT taps produce a chip that is relatively small and is stored in the taps flutes. The HT taps have a high cutting edge strength and can be used on a wide variety of machines from manual drilling machines and machining centers.

Tapping Speed depending on Materials

Low carbon steels 低碳素鋼	Medium carbon steels 中炭素鋼	High carbon steels 高炭素鋼
5~10 (m/min)	5~10 (m/min)	5~10 (m/min)



Segment : 1A

Size	Class	Code	Chamfer	L (inch)	ℓ (inch)	ℓ _n (inch)	ℓ _s (inch)	D _s (inch)	K (inch)	ℓ _k (inch)	No. of flutes	TYPE
For Metric Threads												
M2 × 0.4	D3	TS2.0E3NEB5	5P	1.772	0.314	-	1.161	0.141	0.11	0.187	3	1
M2 × 0.4	D3	TS2.0E3NEBA	1.5P	1.772	0.314	-	1.161	0.141	0.11	0.187	3	1
M2.2 × 0.45	D3	TS2.2F3NEB5	5P	1.772	0.314	-	1.161	0.141	0.11	0.187	3	1
M2.2 × 0.45	D3	TS2.2F3NEBA	1.5P	1.772	0.314	-	1.161	0.141	0.11	0.187	3	1
M2.5 × 0.45	D3	TS2.5F3NEB5	5P	2.205	0.354	0.693	1.28	0.141	0.11	0.187	3	2
M2.5 × 0.45	D3	TS2.5F3NEBA	1.5P	2.205	0.354	0.693	1.28	0.141	0.11	0.187	3	2
M2.6 × 0.45	D3	TS2.6F3NEB5	5P	2.205	0.354	0.709	1.28	0.141	0.11	0.187	3	2
M2.6 × 0.45	D3	TS2.6F3NEBA	1.5P	2.205	0.354	0.709	1.28	0.141	0.11	0.187	3	2
M3 × 0.5	D3	TS3.0G3NEB5	5P	2.205	0.433	0.736	1.339	0.141	0.11	0.187	3	2
M3 × 0.5	D3	TS3.0G3NEBA	1.5P	2.205	0.433	0.736	1.339	0.141	0.11	0.187	3	2
M3.5 × 0.6	D4	TS3.5H4NEB5	5P	2.205	0.433	0.748	1.339	0.141	0.11	0.187	3	2
M3.5 × 0.6	D4	TS3.5H4NEBA	1.5P	2.205	0.433	0.748	1.339	0.141	0.11	0.187	3	2

YAMAWA BY PIONEER
LINEUP
ROLL TAPS

**DON'T SEE IT?
GIVE US A CALL!
847.593.6000**

**MHRZ
HP-RZ**



CHICAGO INVENTORY 78

Overall length	Thread length	Thread + Neck length	Shank length	Shank dia.	Size of square	Length of square
L	ℓ	ℓ _n	ℓ _s	D _s	K	ℓ _k

Roll Tap Series

Z-PRO **DIN Length**
MHRZ



Z-PRO
Roll Taps for Medium Hardness Carbon Steels

Specification

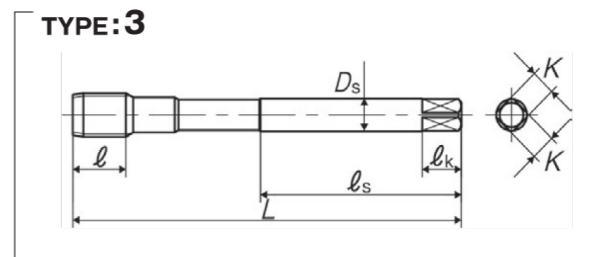
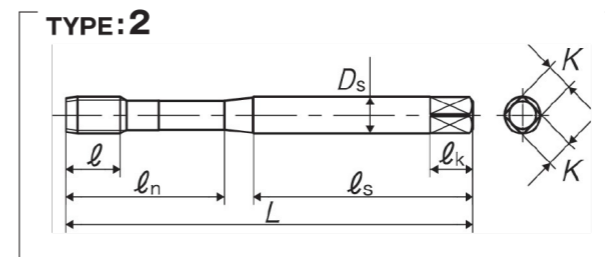
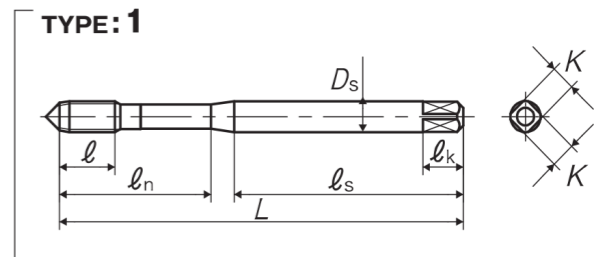


■ Suitable tapping in thermal refined steels (~35HRC).

Tapping Speed depending on Materials

Medium carbon steels 中炭素鋼	High carbon steels 高炭素鋼	Alloy steels 合金鋼	Thermal refined steels 調質鋼
10~30 (m/min)	10~30 (m/min)	10~30 (m/min)	10~20 (m/min) 25~35HRC

**DON'T SEE IT?
GIVE US A CALL!
847.593.6000**



Segment: 1J

Size	Class	Code	Chamfer	L (inch)	ℓ (inch)	ℓ _n (inch)	ℓ _s (inch)	D _s (inch)	K (inch)	ℓ _k (inch)	Lobe	TYPE
For Unified Threads												
No.10-24UNC	H6	5110103039	4P	2.756	0.354	0.945	1.654	0.194	0.152	0.25	5	1
No.10-24UNC	H6	5111103039	2P	2.756	0.354	0.945	1.654	0.194	0.152	0.25	5	1
No.10-32UNF	H6	5110103041	4P	2.756	0.354	0.945	1.654	0.194	0.152	0.25	5	1
No.10-32UNF	H6	5111103041	2P	2.756	0.354	0.945	1.654	0.194	0.152	0.25	5	1
1/4-20UNC	H7	5110103058	4P	3.15	0.433	1.181	1.713	0.255	0.191	0.312	5	1
1/4-20UNC	H7	5111103058	2P	3.15	0.433	1.181	1.713	0.255	0.191	0.312	5	1
1/4-28UNF	H6	5110103062	4P	3.15	0.433	1.181	1.713	0.255	0.191	0.312	5	1
1/4-28UNF	H6	5111103062	2P	3.15	0.433	1.181	1.713	0.255	0.191	0.312	5	1
5/16-18UNC	H8	5110103071	4P	3.543	0.472	1.378	1.831	0.318	0.238	0.375	6	2
5/16-18UNC	H8	5111103071	2P	3.543	0.472	1.378	1.831	0.318	0.238	0.375	6	2
5/16-24UNF	H7	5110103074	4P	3.543	0.472	1.378	1.831	0.318	0.238	0.375	6	2
5/16-24UNF	H7	5111103074	2P	3.543	0.472	1.378	1.831	0.318	0.238	0.375	6	2
3/8-16UNC	H8	5110103082	4P	3.937	0.512	1.535	2.028	0.381	0.286	0.437	8	2
3/8-16UNC	H8	5111103082	2P	3.937	0.512	1.535	2.028	0.381	0.286	0.437	8	2
3/8-24UNF	H7	5110103085	4P	3.937	0.512	1.535	2.028	0.381	0.286	0.437	8	2
3/8-24UNF	H7	5111103085	2P	3.937	0.512	1.535	2.028	0.381	0.286	0.437	8	2
7/16-14UNC	H9	5110103098	4P	3.937	0.512	-	2.008	0.323	0.242	0.406	8	3

ANSI

Chicago Supplemental Inventory. Don't see it? Give us a call! 847.593.6000 | sales@pioneerNA.com

Think threads with
YAMAWA

CHICAGO INVENTORY 79

This product is different from JIS products in shape and dimensions, please be careful when using.

Overall length	Thread length	Thread + Neck length	Shank length	Shank dia.	Size of square	Length of square
L	ℓ	ℓn	ℓs	Ds	K	ℓk

Size	Class	Code	Chamfer	L (inch)	ℓ (inch)	ℓn (inch)	ℓs (inch)	Ds (inch)	K (inch)	ℓk (inch)	Lobe	TYPE
7/16-14UNC	H9	5111103098	2P	3.937	0.512	-	2.008	0.323	0.242	0.406	8	3
7/16-20UNF	H8	5110103101	4P	3.937	0.512	-	2.008	0.323	0.242	0.406	8	3
7/16-20UNF	H8	5111103101	2P	3.937	0.512	-	2.008	0.323	0.242	0.406	8	3
1/2-13UNC	H9	5110103111	4P	4.331	0.591	-	2.205	0.367	0.275	0.437	8	3
1/2-13UNC	H9	5111103111	2P	4.331	0.591	-	2.205	0.367	0.275	0.437	8	3
1/2-20UNF	H8	5110103115	4P	4.331	0.591	-	2.205	0.367	0.275	0.437	8	3
1/2-20UNF	H8	5111103115	2P	4.331	0.591	-	2.205	0.367	0.275	0.437	8	3
9/16-12UNC	H10	5110103126	4P	4.331	0.709	-	2.205	0.429	0.322	0.5	8	3
9/16-12UNC	H10	5111103126	2P	4.331	0.709	-	2.205	0.429	0.322	0.5	8	3
9/16-18UNF	H9	5110103129	4P	4.331	0.709	-	2.205	0.429	0.322	0.5	8	3
9/16-18UNF	H9	5111103129	2P	4.331	0.709	-	2.205	0.429	0.322	0.5	8	3

Number of oil grooves : 1/4 and smaller = 5, 5/16 = 6, 3/8 and larger = 8
 For 1/4 and smaller, external centers of 2P chamfer taps are removed.

Overall length	Thread length	Thread + Neck length	Shank length	Shank dia.	Size of square	Length of square
L	ℓ	ℓn	ℓs	Ds	K	ℓk

DIN Length

HP-RZ



High Performance Roll Taps, Coated

**DON'T SEE IT?
GIVE US A CALL!
847.593.6000**

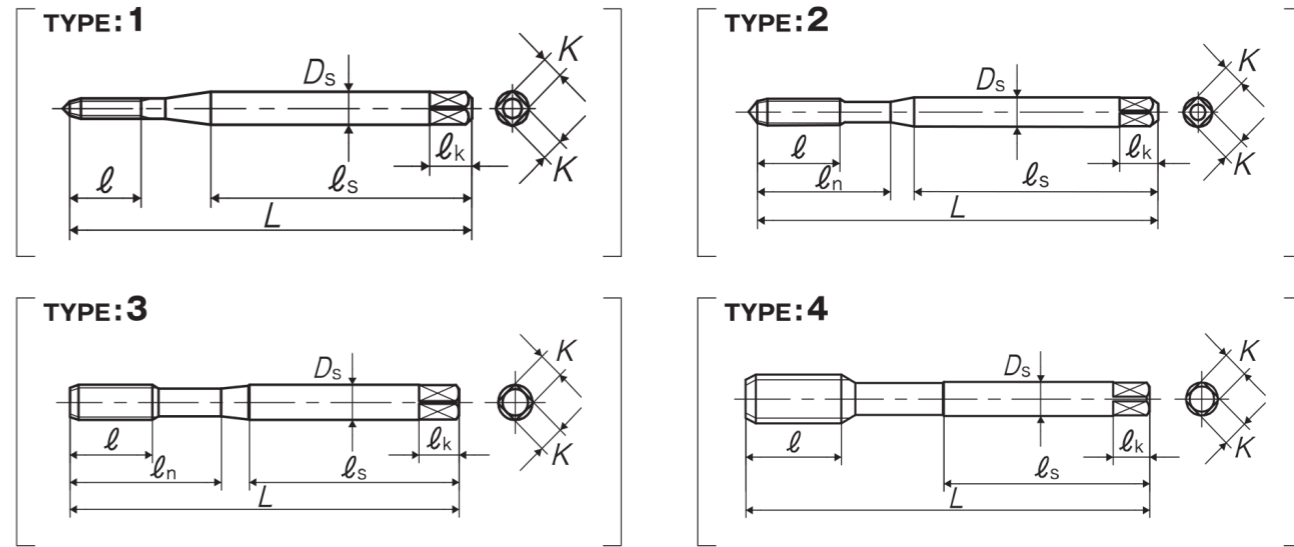
Specification



HP-RZ is the forming tap suitable for steels (up to 35HRC) and light alloys, and applicable to the high speed tapping. Optimum coating suitable to the tapping condition.

Tapping Speed depending on Materials

Low carbon steels 低碳素鋼	Medium carbon steels 中炭素鋼	High carbon steels 高炭素鋼	Alloy steels 合金鋼	Thermal refined steels 調質鋼	Stainless steels ステンレス鋼	Aluminum alloy castings アルミ合金鑄物
15~30 (m/min)	15~30 (m/min)	15~25 (m/min)	15~25 (m/min)	15~25 (m/min)	10~25 (m/min)	15~30 (m/min)
25~35HRC						



Segment : 1J

Size	Class	Code	Chamfer	L (inch)	ℓ (inch)	ℓn (inch)	ℓs (inch)	Ds (inch)	K (inch)	ℓk (inch)	Lobe	TYPE
For Metric Threads												
M3 × 0.5	D5	386885M	4P	2.205	0.433	0.736	1.339	0.141	0.11	0.187	4	2
M3 × 0.5	D5	386864M	2P	2.205	0.433	0.736	1.339	0.141	0.11	0.187	4	2
M3.5 × 0.6	D6	386886M	4P	2.205	0.433	0.748	1.339	0.141	0.11	0.187	4	2
M3.5 × 0.6	D6	386865M	2P	2.205	0.433	0.748	1.339	0.141	0.11	0.187	4	2
M4 × 0.7	D6	386887M	4P	2.48	0.512	0.815	1.535	0.168	0.131	0.25	4	2
M4 × 0.7	D6	386866M	2P	2.48	0.512	0.815	1.535	0.168	0.131	0.25	4	2
M5 × 0.8	D7	386888M	4P	2.756	0.551	0.984	1.654	0.194	0.152	0.25	4	2
M5 × 0.8	D7	386867M	2P	2.756	0.551	0.984	1.654	0.194	0.152	0.25	4	2
M6 × 1	D8	386889M	4P	3.15	0.591	1.181	1.713	0.255	0.191	0.312	4	2
M6 × 1	D8	386868M	2P	3.15	0.591	1.181	1.713	0.255	0.191	0.312	4	2
M7 × 1	D9	386870M	4P	3.543	0.748	1.339	1.831	0.318	0.238	0.375	4	3
M7 × 1	D9	386869M	2P	3.543	0.748	1.339	1.831	0.318	0.238	0.375	4	3
M8 × 1.25	D9	386874M	4P	3.543	0.748	1.378	1.831	0.318	0.238	0.375	6	3
M8 × 1.25	D9	386873M	2P	3.543	0.748	1.378	1.831	0.318	0.238	0.375	6	3
M8 × 1	D9	386872M	4P	3.543	0.748	1.378	1.831	0.318	0.238	0.375	6	3
M8 × 1	D9	386871M	2P	3.543	0.748	1.378	1.831	0.318	0.238	0.375	6	3
M10 × 1.5	D10	386878M	4P	3.937	0.906	1.535	2.126	0.381	0.286	0.437	8	3

ANSI

Chicago Supplemental Inventory. Don't see it? Give us a call! 847.593.6000 | sales@pioneerNA.com

Chicago Supplemental Inventory. Don't see it? Give us a call! 847.593.6000 | sales@pioneerNA.com

YAMAWA BY PIONEER

LINEUP

SPECIAL THREAD TAPS

**DON'T SEE IT?
GIVE US A CALL!
847.593.6000**

ZELX NI SP STI
ZELX NI PO STI
PO STI
PO OX STI



Overall length	Thread length	Thread + Neck length	Shank dia.	Size of square	Length of square
L	ℓ	ℓn	Ds	K	ℓk

Special Thread Taps / Simple Inspection Tools

ANSI Length

ZELX NI SP STI

Spiral Fluted Taps for Helical Coil Wire Screw Thread Inserts and for Nickel Base Alloys

Specification

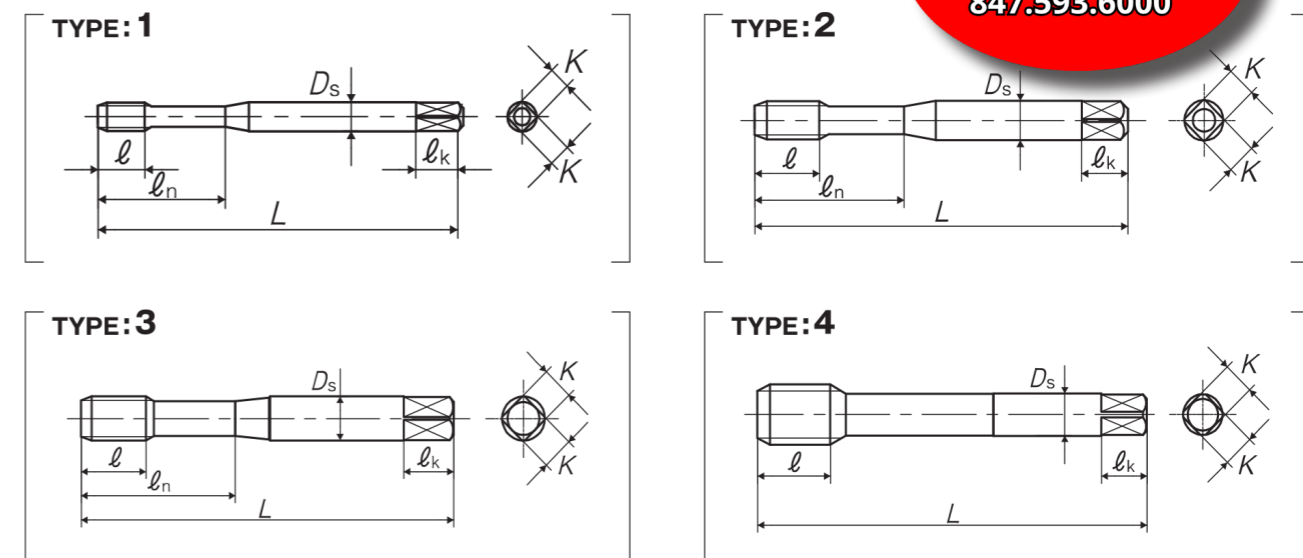


ZELX NI SP STI is the tap for nickel base alloys which, with nickel as main composition, have much higher corrosion resistance and higher heat resistance than steels, and produces threads oversize enough to accommodate helical coil wire thread inserts.

Tapping Speed depending on Materials

Medium carbon steels 中炭素鋼	High carbon steels 高炭素鋼	Stainless steels ステンレス鋼	Nickel base alloys ニッケル基合金
5~15 (m/min)	5~15 (m/min)	5~15 (m/min)	5~10 (m/min)

**DON'T SEE IT?
GIVE US A CALL!
847.593.6000**



Segment : 1D

Size	Class	Code	Chamfer	L (inch)	ℓ (inch)	ℓn (inch)	Ds (inch)	K (inch)	ℓk (inch)	No. of flutes	TYPE
For Unified Threads											
No.2-56UNC	GH2	Y87400	3P	1.875	0.236	0.562	0.141	0.11	0.187	3	1
No.4-40UNC	GH1	Y87403	3P	2	0.276	0.687	0.141	0.11	0.187	3	1
No.4-40UNC	GH2	Y87404	3P	2	0.276	0.687	0.141	0.11	0.187	3	1
No.4-40UNC	GH2	Y87004	1.5P	2	0.276	0.687	0.141	0.11	0.187	3	1
No.4-40UNC	GH3	Y87420	3P	2	0.276	0.687	0.141	0.11	0.187	3	1
No.4-40UNC	GH3	Y87419	1.5P	2	0.276	0.687	0.141	0.11	0.187	3	1
No.6-32UNC	GH2	Y87408	3P	2.375	0.354	0.875	0.194	0.152	0.25	3	1
No.6-32UNC	GH2	Y87008	1.5P	2.375	0.354	0.875	0.194	0.152	0.25	3	1
No.6-32UNC	GH3	Y87424	3P	2.375	0.354	0.875	0.194	0.152	0.25	3	1
No.6-32UNC	GH3	Y87425	1.5P	2.375	0.354	0.875	0.194	0.152	0.25	3	1
No.6-32UNC	GH5	Y87042	1.5P	2.375	0.354	0.875	0.194	0.152	0.25	3	1
No.6-40UNF	GH2	Y87409	3P	2.125	0.276	0.75	0.168	0.131	0.25	3	1
No.8-32UNC	GH1	Y81409	3P	2.375	0.354	0.937	0.22	0.165	0.281	3	1
No.8-32UNC	GH2	Y87410	3P	2.375	0.354	0.937	0.22	0.165	0.281	3	1
No.8-32UNC	GH2	Y87026	1.5P	2.375	0.354	0.937	0.22	0.165	0.281	3	1
No.8-32UNC	GH3	Y87426	3P	2.375	0.354	0.937	0.22	0.165	0.281	3	1

ANSI

Chicago Supplemental Inventory. Don't see it? Give us a call! 847.593.6000 | sales@pioneerNA.com

Overall length	Thread length	Thread + Neck length	Shank dia.	Size of square	Length of square
L	ℓ	ℓn	Ds	K	ℓk

Size	Class	Code	Chamfer	L (inch)	ℓ (inch)	ℓn (inch)	Ds (inch)	K (inch)	ℓk (inch)	No. of flutes	TYPE
5/16-18UNC	GH4	Y87272	4.5P	2.937	0.748	1.25	0.381	0.286	0.437	3	3
5/16-24UNF	GH2	Y87251	4.5P	2.937	0.748	1.25	0.381	0.286	0.437	3	3
5/16-24UNF	GH3	Y87261	4.5P	2.937	0.748	1.25	0.381	0.286	0.437	3	3
3/8-16UNC	GH3	Y87262	4.5P	3.375	0.984	-	0.367	0.275	0.437	3	4
3/8-16UNC	GH4	Y87270	4.5P	3.375	0.984	-	0.367	0.275	0.437	3	4
3/8-24UNF	GH2	Y87253	4.5P	3.156	0.866	-	0.323	0.242	0.406	3	4
3/8-24UNF	GH3	Y87263	4.5P	3.156	0.866	-	0.323	0.242	0.406	3	4
7/16-14UNC	GH3	Y87264	4.5P	3.593	0.984	-	0.429	0.322	0.5	3	4
7/16-20UNF	GH3	Y87265	4.5P	3.375	0.984	-	0.367	0.275	0.437	3	4
7/16-20UNF	GH4	Y87275	4.5P	3.375	0.984	-	0.367	0.275	0.437	3	4
1/2-13UNC	GH3	Y87266	4.5P	3.812	1.083	-	0.48	0.36	0.562	3	4
1/2-20UNF	GH3	Y87267	4.5P	3.593	0.984	-	0.429	0.322	0.5	3	4

Overall length	Thread length	Thread + Neck length	Shank length	Shank dia.	Size of square	Length of square
L	ℓ	ℓn	ℓs	Ds	K	ℓk

DIN Length

PO STI



Spiral Pointed Taps for Helical Coil Wire Screw Thread Inserts

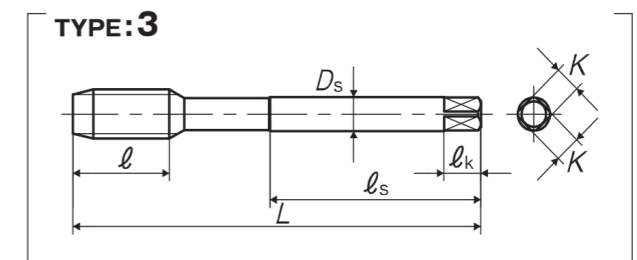
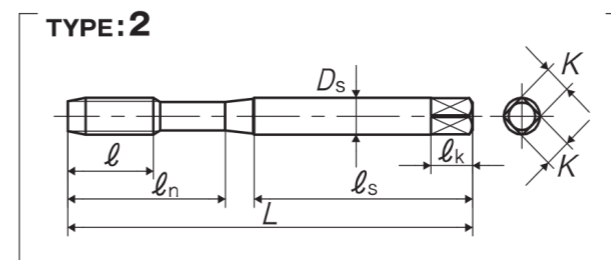
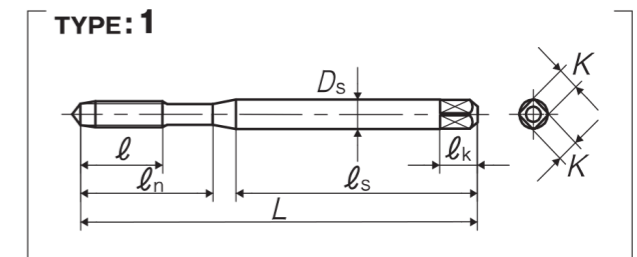
Specification



■ Spiral pointed tap to cut internal threads for helical coil to enter.

Tapping Speed depending on Materials

Brass 黄銅	Brass castings 黄銅鑄物	Bronze 青銅	Wrought aluminum アルミ圧延材	Aluminum alloy castings アルミ合金鑄物	Magnesium alloy die castings マグネシウム合金鑄物	Zinc alloy castings 亜鉛合金鑄物
5~15 (m/min)	5~15 (m/min)	5~15 (m/min)	5~15 (m/min)	5~15 (m/min)	5~15 (m/min)	5~15 (m/min)



Segment : 1E

Size	Class	Code	Chamfer	L (inch)	ℓ (inch)	ℓn (inch)	ℓs (inch)	Ds (inch)	K (inch)	ℓk (inch)	No. of flutes	TYPE
For Unified Threads												
No.2-56UNC	GH1	PUUN2E1NEB	5P	2.205	0.354	0.709	1.28	0.141	0.11	0.187	2	1
No.2-56UNC	GH2	PUUN2E2NEB	5P	2.205	0.354	0.709	1.28	0.141	0.11	0.187	2	1
No.4-40UNC	GH1	PUUN4H1NEB	5P	2.48	0.512	0.827	1.496	0.168	0.131	0.25	2	1
No.4-40UNC	GH2	PUUN4H2NEB	5P	2.48	0.512	0.827	1.496	0.168	0.131	0.25	2	1
No.6-32UNC	GH1	PUUN6J1NEB	5P	2.756	0.551	0.945	1.654	0.194	0.131	0.25	2	1
No.6-32UNC	GH2	PUUN6J2NEB	5P	2.756	0.551	0.945	1.654	0.194	0.131	0.25	2	1
No.8-32UNC	GH1	PUUN8J1NEB	5P	3.15	0.591	0.984	1.929	0.22	0.165	0.281	2	1
No.8-32UNC	GH2	PUUN8J2NEB	5P	3.15	0.591	0.984	1.929	0.22	0.165	0.281	2	1
No.10-24UNC	GH2	PUUNAM2NEB	5P	3.15	0.591	1.181	1.713	0.255	0.191	0.312	2	1
No.10-24UNC	GH3	PUUNAM3NEB	5P	3.15	0.591	1.181	1.713	0.255	0.191	0.312	2	1
No.10-32UNF	GH2	PUUNA J2NEB	5P	3.15	0.591	1.181	1.713	0.255	0.191	0.312	2	1
No.10-32UNF	GH3	PUUNA J3NEB	5P	3.15	0.591	1.181	1.713	0.255	0.191	0.312	2	1
1/4-20UNC	GH2	PUU04N2NEB	5P	3.543	0.748	1.378	1.831	0.318	0.238	0.375	2	2
1/4-20UNC	GH3	PUU04N3NEB	5P	3.543	0.748	1.378	1.831	0.318	0.238	0.375	2	2
1/4-28UNF	GH2	PUU04K2NEB	5P	3.543	0.748	1.378	1.831	0.318	0.238	0.375	2	2
1/4-28UNF	GH3	PUU04K3NEB	5P	3.543	0.748	1.378	1.831	0.318	0.238	0.375	2	2

ANSI

Overall length	Thread length	Thread + Neck length	Shank length	Shank dia.	Size of square	Length of square
L	ℓ	ℓn	ℓs	Ds	K	ℓk

Size	Class	Code	Chamfer	L (inch)	ℓ (inch)	ℓn (inch)	ℓs (inch)	Ds (inch)	K (inch)	ℓk (inch)	No. of flutes	TYPE
5/16-18UNC	GH2	PUU05O2NEB	5P	3.937	0.906	1.535	2.067	0.381	0.286	0.437	2	2
5/16-18UNC	GH3	PUU05O3NEB	5P	3.937	0.906	1.535	2.067	0.381	0.286	0.437	2	2
5/16-24UNF	GH2	PUU05M2NEB	5P	3.937	0.906	1.535	2.028	0.381	0.286	0.437	2	2
5/16-24UNF	GH3	PUU05M3NEB	5P	3.937	0.906	1.535	2.028	0.381	0.286	0.437	2	2
3/8-16UNC	GH3	PUU06P3NEB	5P	4.331	1.024	-	2.205	0.367	0.275	0.437	3	3
3/8-16UNC	GH4	PUU06P4NEB	5P	4.331	1.024	-	2.205	0.367	0.275	0.437	3	3
3/8-24UNF	GH2	PUU06M2NEB	5P	3.937	0.906	-	2.008	0.323	0.242	0.406	3	3
3/8-24UNF	GH3	PUU06M3NEB	5P	3.937	0.906	-	2.008	0.323	0.242	0.406	3	3
7/16-14UNC	GH3	PUU07Q3NEB	5P	4.331	1.024	-	2.205	0.429	0.322	0.5	3	3
7/16-14UNC	GH4	PUU07Q4NEB	5P	4.331	1.024	-	2.205	0.429	0.322	0.5	3	3
7/16-20UNF	GH3	PUU07N3NEB	5P	4.331	1.024	-	2.205	0.429	0.322	0.5	3	3
7/16-20UNF	GH4	PUU07N4NEB	5P	4.331	1.024	-	2.205	0.429	0.322	0.5	3	3
1/2-13UNC	GH3	PUU08R3NEB	5P	4.331	1.024	-	2.205	0.48	0.36	0.562	3	3
1/2-13UNC	GH4	PUU08R4NEB	5P	4.331	1.024	-	2.205	0.48	0.36	0.562	3	3
1/2-20UNF	GH3	PUU08N3NEB	5P	4.331	1.024	-	2.205	0.48	0.36	0.562	3	3
1/2-20UNF	GH4	PUU08N4NEB	5P	4.331	1.024	-	2.205	0.48	0.36	0.562	3	3

Overall length	Thread length	Thread + Neck length	Shank length	Shank dia.	Size of square	Length of square
L	ℓ	ℓn	ℓs	Ds	K	ℓk

DIN Length

PO OX STI



Spiral Pointed Taps for Helical Coil Wire Screw Thread Inserts, Oxidized

Specification

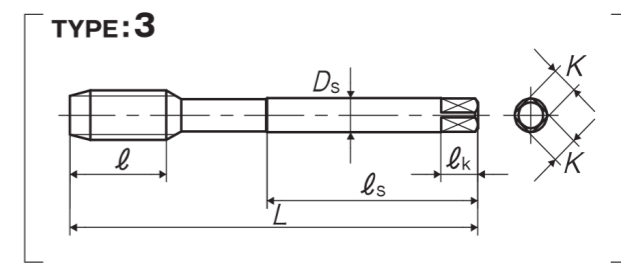
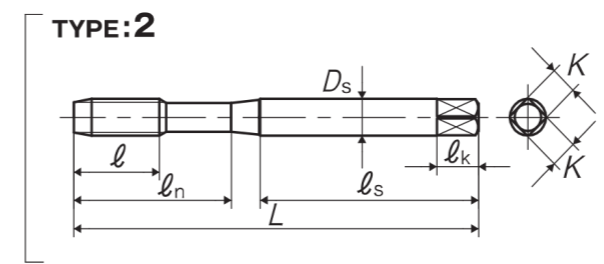
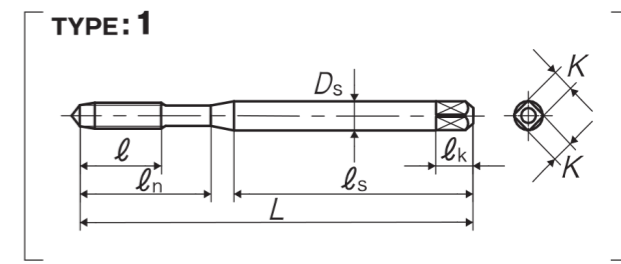


■ Spiral pointed tap to cut internal threads for helical coil to enter.

Tapping Speed depending on Materials

Low carbon steels 低碳素鋼	Medium carbon steels 中炭素鋼
5~10 (m/min)	5~10 (m/min)

**DON'T SEE IT?
GIVE US A CALL!
847.593.6000**



Segment: 1E

Size	Class	Code	Chamfer	L (inch)	ℓ (inch)	ℓn (inch)	ℓs (inch)	Ds (inch)	K (inch)	ℓk (inch)	No. of flutes	TYPE
For Unified Threads												
No.2-56UNC	GH1	PUUN2E1NEX	5P	2.205	0.354	0.709	1.28	0.141	0.11	0.187	2	1
No.2-56UNC	GH2	PUUN2E2NEX	5P	2.205	0.354	0.709	1.28	0.141	0.11	0.187	2	1
No.4-40UNC	GH1	PUUN4H1NEX	5P	2.48	0.512	0.827	1.496	0.168	0.131	0.25	2	1
No.4-40UNC	GH2	PUUN4H2NEX	5P	2.48	0.512	0.827	1.496	0.168	0.131	0.25	2	1
No.6-32UNC	GH1	PUUN6J1NEX	5P	2.756	0.551	0.945	1.654	0.194	0.131	0.25	2	1
No.6-32UNC	GH2	PUUN6J2NEX	5P	2.756	0.551	0.945	1.654	0.194	0.131	0.25	2	1
No.8-32UNC	GH1	PUUN8J1NEX	5P	3.15	0.591	0.984	1.929	0.22	0.165	0.281	2	1
No.8-32UNC	GH2	PUUN8J2NEX	5P	3.15	0.591	0.984	1.929	0.22	0.165	0.281	2	1
No.10-24UNC	GH2	PUUNAM2NEX	5P	3.15	0.591	1.181	1.713	0.255	0.191	0.312	2	1
No.10-24UNC	GH3	PUUNAM3NEX	5P	3.15	0.591	1.181	1.713	0.255	0.191	0.312	2	1
No.10-32UNF	GH2	PUUNAJ2NEX	5P	3.15	0.591	1.181	1.713	0.255	0.191	0.312	2	1
No.10-32UNF	GH3	PUUNAJ3NEX	5P	3.15	0.591	1.181	1.713	0.255	0.191	0.312	2	1
1/4-20UNC	GH2	PUU04N2NEX	5P	3.543	0.748	1.378	1.831	0.318	0.238	0.375	2	2
1/4-20UNC	GH3	PUU04N3NEX	5P	3.543	0.748	1.378	1.831	0.318	0.238	0.375	2	2
1/4-28UNF	GH2	PUU04K2NEX	5P	3.543	0.748	1.378	1.831	0.318	0.238	0.375	2	2
1/4-28UNF	GH3	PUU04K3NEX	5P	3.543	0.748	1.378	1.831	0.318	0.238	0.375	2	2
5/16-18UNC	GH2	PUU05O2NEX	5P	3.937	0.906	1.535	2.067	0.381	0.286	0.437	2	2

ANSI

Chicago Supplemental Inventory. Don't see it? Give us a call! 847.593.6000 | sales@pioneerNA.com

Chicago Supplemental Inventory. Don't see it? Give us a call! 847.593.6000 | sales@pioneerNA.com

NOTES

.....
.....
.....
.....
.....
.....
.....
.....
.....
.....
.....
.....
.....
.....
.....
.....
.....
.....
.....
.....
.....
.....

NOTES

.....
.....
.....
.....
.....
.....
.....
.....
.....
.....
.....
.....
.....
.....
.....
.....
.....
.....
.....
.....
.....
.....



Pioneer North America

641 Fargo Ave., Elk Grove Village, IL 60007
847.593.6000 | sales@PioneerNA.com
www.PioneerNA.com