

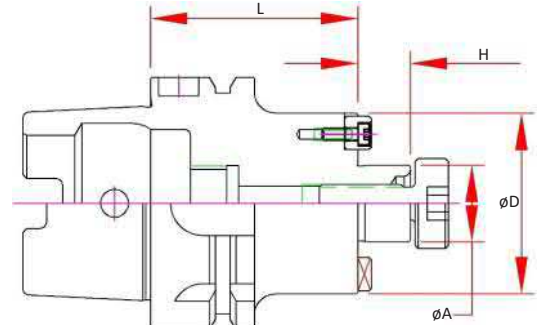
HSK063A Shell Mill Adapters

Features

- 3 μm - 0.0001" Bore Runout
- H5 Bore Tolerance or better
- Coolant Thru Body
- Pre-Balanced for use @ 20,000 RPM

Optional (Order Separately):

- FX Coolant (add "F" to the part number)

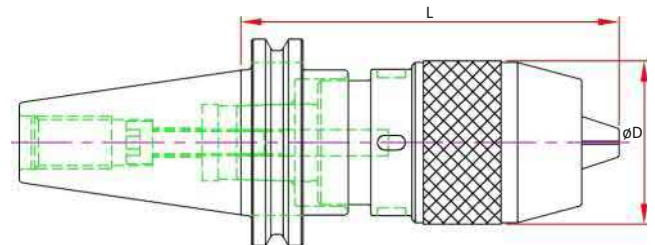


Part Number	A Pilot	D	H	L Projection	Drive Key Size	Drive Key Number	Mounting Screw Thread	Mounting Screw#
HSK063A-SM050-0177				1.77				
HSK063A-SM050-0394	0.500	1.38	0.57	3.94	0.250	DK-SM050	1/4-28	SCW-SM050
HSK063A-SM050-0630				6.30				
HSK063A-SM075-0177				1.77				
HSK063A-SM075-0394	0.75	1.71	0.69	3.94	0.312	DK-SM075	3/8-24	SCW-SM075
HSK063A-SM075-0630				6.30				
HSK063A-SM075-0800				8.00				
HSK063A-SM100-0197				1.97				
HSK063A-SM100-0394	1.00	1.97	0.69	3.94	0.375	DK-SM100	1/2-20	SCW-SM100
HSK063A-SM100-0630				6.30				
HSK063A-SM125-0236	1.25	2.75	0.69	2.36	0.500	DK-SM125	5/8-18	SCW-SM125
HSK063A-SM150-0236	1.50	3.78	0.94	2.36	0.625	DK-SM150	3/4-16	SCW-SM150

HSK063A Drill Chuck

Features:

- Non Coolant
- Keyless w/ slots for spanner wrench (sold separately)



Part Number	Range	D	L Projection	Wrench
HSK 63A-DC13-155	0.04 - 0.50	1.96	6.10	DCW13