

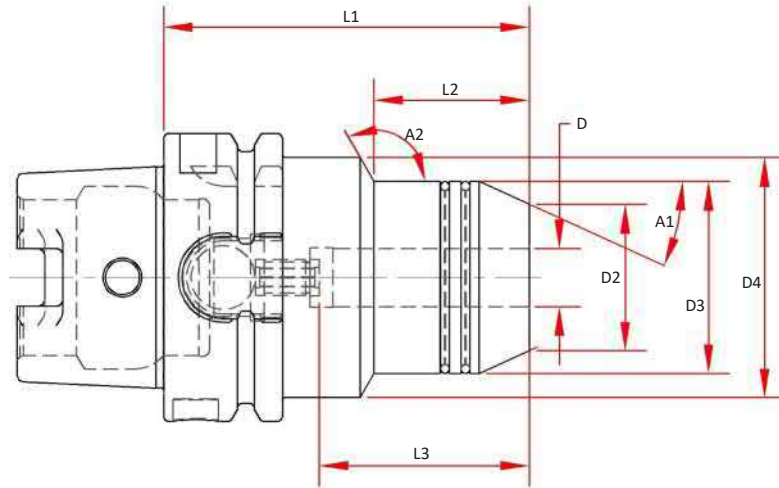
# HSK063A Hydraulic Chucks

## Features

- \* 3  $\mu\text{m}$  - 0.0001" or less run-out providing premium performance in drilling and reaming applications
- Positive Locking System
- Coolant Thru the Center
- Designed for Tool Shanks w/ ISO h6 Class Tolerance
- Dynamically Pre-Balanced G2.5 @ 25,000 RPM or < 1gmm

## Optional (Order Separately):

- Wrench
- Sealed Collets
- Mill Chuck Collets



Part Number	D Bore	D2	D3	D4	A1	A2	L1 Projection	L2	L3 Max Tool Enters	Wrench
HSK063A-HC050-0315	0.5000	1.26	1.65	2.07	24.5°	120°	3.15	1.34	1.81	MXW04
HSK063A-HC075-0315	0.7500	1.50	2.07		24.5°		3.15	2.13	2.01	MXW05

CAT40

CAT50

BT30

BT40

HSK 40E

HSK 63A

HSK 100A

STRAIGHT SHANKS

COLLETS

PARTS & ACCESS.

SHRINK MACHINES

INDEXERS

