

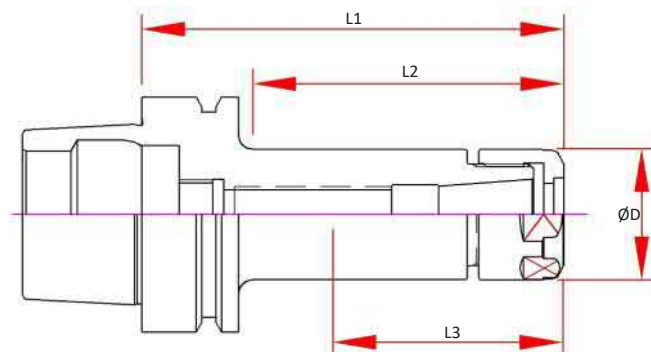
# HSK040E SX Collet Chucks

## Features

- 3 µm - 0.0001" Runout Taper to Taper
- Coolant Thru Body
- Dynamically Pre-Balanced G2.5 @ 25,000 RPM or <1gmm

## Optional (Order Separately):

- Wrench
- Torque Wrench
- Collets
  - 0.005mm (0.0002") Standard
  - 0.003mm (0.0001") Ultra Precision
- Fine Trim Balance  
(Sample cutter required for balance compensation)



Part Number	D	L Projection	L2	L3	Collet	Nut	Wrench
HSK040E-SX06-060	0.77	2.36	1.46	1.56	SX06	SXN-06	SXW-06
HSK040E-SX06-090	0.77	3.54	2.64	2.48	SX06	SXN-06	SXW-06
HSK040E-SX10-060	1.08	2.36	1.46	1.61	SX10	SXN-10	SXW-10
HSK040E-SX10-090	1.08	3.54	2.64	2.48	SX10	SXN-10	SXW-10
HSK040E-SX16-080	1.58	3.15	2.32	2.44	SX16	SXN-16	SXW-16