

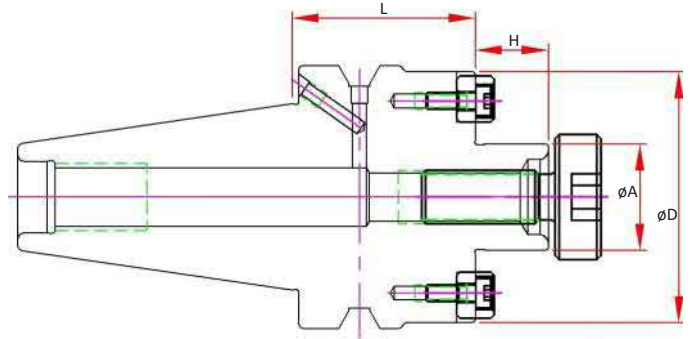
BT40 Shell Mill Adapters

Features

- 3 μm - 0.0001" Bore Runout
- H5 Bore Tolerance or better
- Tapers are ground better than AT3 for optimal T.I.R.
- Coolant Thru Body
- Pre-Balanced for use @ 20,000 RPM

Optional (Order Separately):

- FX Coolant (add "F" to the part number)
- DIN-B Coolant (Select models)



CAT40

CAT50

BT30

BT 40

Standard Spindle Part Number	A Pilot	D	H	L Projection	Drive Key Size	Drive Key Number	Mounting Screw Thread	Mounting Screw#
BT40-SM075-0175	0.75	1.75	0.69	1.75	0.312	DK-SM075	3/8-24	SCW-SM075
BT40-SM075-0400				4.00				
BT40-SM100-0175	1.00	1.97	0.69	1.75	0.375	DK-SM100	1/2-20	SCW-SM100
BT40-SM100-0400				4.00				
BT40-SM150-0200	1.50	3.82	0.94	2.00	0.625	DK-SM150	3/4-16	SCW-SM150



HSK 40E

HSK 63A

HSK 100A

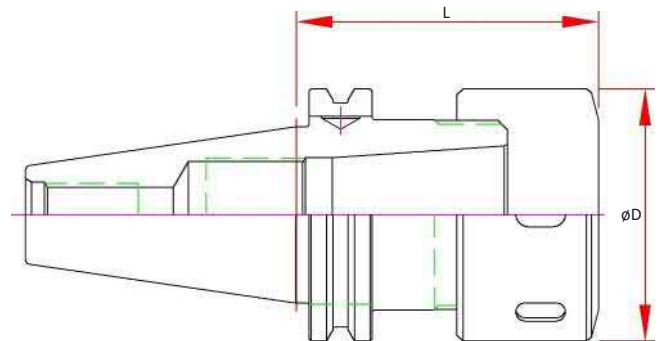
TG - Collet Chuck

Features

- 3 μm - 0.0001" Runout Taper to Taper
- Coolant Thru Body
- Dynamically Pre-Balanced @ 20,000 RPM (CAT50 @ 15,000 RPM)
- Tapers are ground better than AT3 for optimal T.I.R.

Optional (Order Separately):

- Wrench
- Torque Wrench
- Collets
- DIN-B Coolant (Select models)



STRAIGHT SHANKS

COLLETS

PARTS & ACCESS.

SHRINK MACHINES

INDEXERS



	Part Number	Range	D	L Projection	Collet	Screw	Nut	Wrench
BT40	BT40-TG100-0300	.094 - 1.00	2.48	3.00	TG100	ASC-ER40	TGN100	58-65 HOOK

