

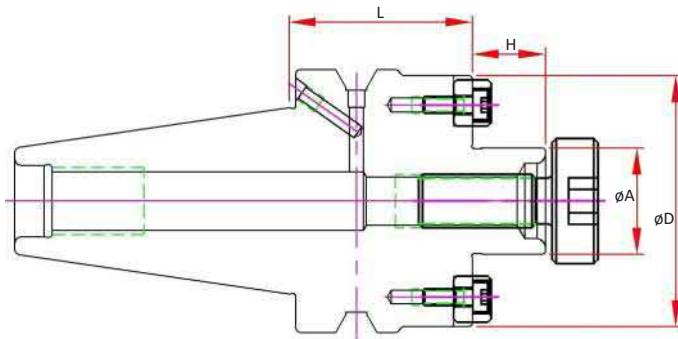
BT30 Shell Mill Adapters

Features

- 3 μm - 0.0001" Bore Runout
- H5 Bore Tolerance or better
- Tapers are ground better than AT3 for optimal T.I.R.
- Coolant Thru Body
- Pre-Balanced for use @ 20,000 RPM

Optional (Order Separately):

- FX Coolant (add "F" to the part number)



| Dual Contact Spindle Part Number | Standard Spindle Part Number | A Pilot | D | H | L Projection | Drive Key Size | Drive Key Number | Mounting Screw Thread | Mounting Screw# |
|----------------------------------|------------------------------|---------|------|------|--------------|----------------|------------------|-----------------------|-----------------|
| BT30-SM050-0119-B | BT30-SM050-0119 | | | | 1.19 | | | | |
| BT30-SM050-0200-B | | 0.50 | 1.38 | 0.57 | 2.00 | 0.250 | DK-SM050 | 1/4-28 | SCW-SM050 |
| BT30-SM050-0400-B | | | | | 4.00 | | | | |
| BT30-SM075-0119-B | BT30-SM075-0119 | | | | 1.19 | | | | |
| BT30-SM075-0200-B | | 0.75 | 1.75 | 0.69 | 2.00 | 0.312 | DK-SM075 | 3/8-24 | SCW-SM075 |
| BT30-SM075-0400-B | | | | | 4.00 | | | | |
| BT30-SM100-0119-B | BT30-SM100-0119 | 1.00 | 1.97 | 0.69 | 1.19 | 0.375 | DK-SM100 | 1/2-20 | SCW-SM100 |