

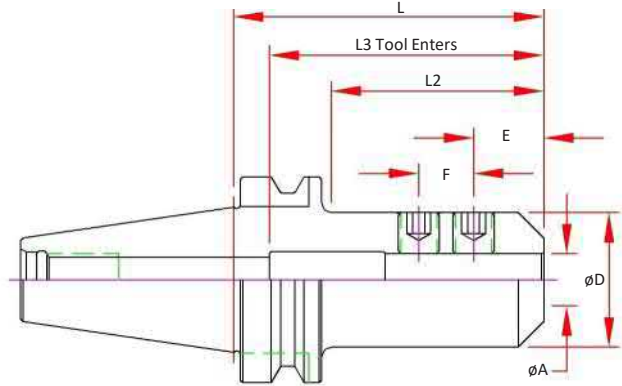
# BT30 End Mill Adapters

## Features

- 3  $\mu\text{m}$  - 0.0001" Bore Runout
- H5 Bore Tolerance or better
- Tapers are ground better than AT3 for optimal T.I.R.
- Coolant Thru
- Pre-Balanced for use @ 20,000 RPM

## Optional (Order Separately):

- Jet-Blast (add "J" to the part number)



	Dual Contact Spindle Part Number	Standard Spindle Part Number	A Bore	D	E	F	L Projection	L2	L3 Max. Tool Enters	Screw Number
1/8	BT30-EM012-0236-B	BT30-EM012-0236	0.1250	0.69	0.38	-	2.36	1.37	3.32	3
	BT30-EM012-0400-B	BT30-EM012-0400					4.00	3.00	4.96	
3/16	BT30-EM018-0236-B	BT30-EM018-0236	0.1875	0.69	0.50	-	2.36	1.37	3.32	4
	BT30-EM018-0400-B	BT30-EM018-0400					4.00	3.00	4.96	
1/4	BT30-EM025-0236-B	BT30-EM025-0236	0.2500	0.78	0.38	-	2.36	1.37	3.32	4
	BT30-EM025-0400-B	BT30-EM025-0400					4.00	3.00	4.96	
5/16	BT30-EM031-0236-B	BT30-EM031-0236	0.3125	0.88	0.60	-	2.36	1.37	3.32	4-BT30
		BT30-EM031-0400					4.00	3.00	2.96	
3/8	BT30-EM037-0236-B	BT30-EM037-0236	0.3750	1.00	0.75	-	2.36	1.37	2.36	5
		BT30-EM037-0400-B					BT30-EM037-0400	4.00	3.00	
1/2	BT30-EM050-0236-B	BT30-EM050-0236	0.5000	1.25	0.88	-	2.36	1.37	2.56	6
		BT30-EM050-0400-B					BT30-EM050-0400	4.00	3.00	
5/8	BT30-EM062-0236-B	BT30-EM062-0236	0.6250	1.50	0.94	-	2.36	1.37	2.25	7
		BT30-EM075-0236-B					BT30-EM075-0236	2.36	1.57	
3/4		BT30-EM075-0400	0.7500	1.75	1.00	-	4.00	3.21	2.56	8
7/8		BT30-EM087-0354	0.8750	1.75	1.00	0.81	3.54	2.75	3.15	(2) 8
1	BT30-EM100-0275-B	BT30-EM100-0275	1.0000	2.00	1.12	-	2.75	1.96	2.50	10

CAT40

CAT50

BT 30

BT40

HSK 40E

HSK 63A

HSK 100A

STRAIGHT SHANKS

COLLETS

PARTS & ACCESS.

SHRINK MACHINES

INDEXERS

