

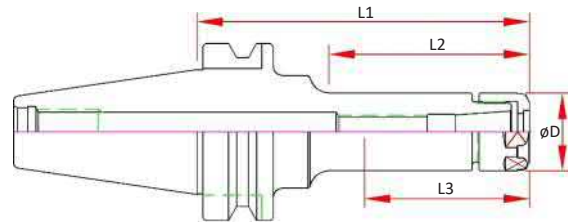
# BT30 SX Collet Chucks

## Features

- 3  $\mu\text{m}$  - 0.0001" Runout Taper to Taper
- Coolant Thru Body
- Dynamically Pre-Balanced G2.5 @ 25,000 RPM or <1gmm
- Tapers are ground better than AT3 for optimal T.I.R.

## Optional (Order Separately):

- Wrench
- Torque Wrench
- Collets
  - 0.005mm (0.0002") Standard
  - 0.003mm (0.0001") Ultra Precision
- Fine Trim Balance (Sample cutter required for balance compensation)



Dual Contact Spindle Part Number	Standard Spindle Part Number	D	L1 Projection	L2	L3 Max. Preset	Collet	Nut	Wrench
BT30-SX06-060-B	BT30-SX06-060	0.77	2.36	1.30	2.15	SX06	SXN-06	SXW-06
BT30-SX06-090-B	BT30-SX06-090		3.54	2.20	2.15			
BT30-SX10-060-B	BT30-SX10-060	1.08	2.36	1.38	2.30	SX10	SXN-10	SXW-10
BT30-SX10-090-B	BT30-SX10-090		3.54	2.56	2.40			
BT30-SX16-060-B	BT30-SX16-060	1.58	2.36	1.46	2.30	SX16	SXN-16	SXW-16
BT30-SX16-090-B	BT30-SX16-090		3.54	2.64	3.03**			
BT30-SX25M-070-B	BT30-SX25M-070	1.97	2.76	2.68	2.42	SX25	SXN-25	50-55 HOOK

\*\* 10MM Tool Shanks & Smaller

CAT40

CAT50

BT 30

BT40

HSK 40E

HSK 63A

HSK 100A

STRAIGHT SHANKS

COLLETS

PARTS & ACCESS.

SHRINK MACHINES

INDEXERS

