

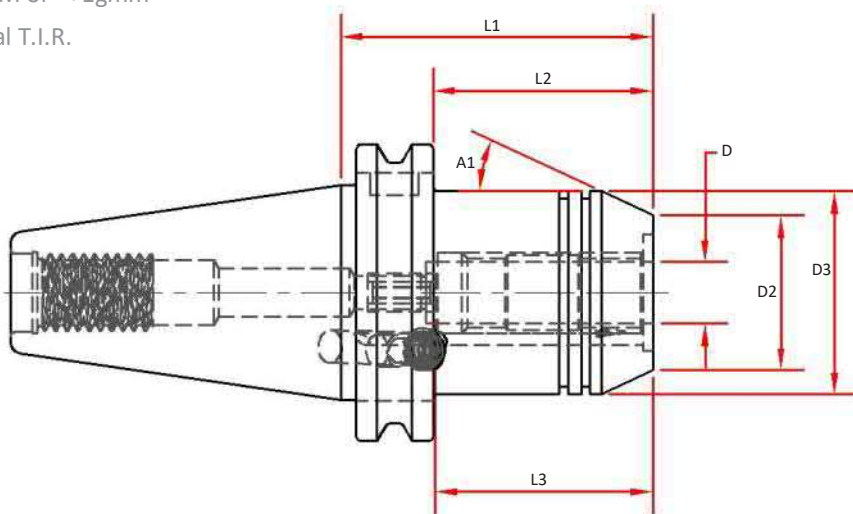
# CAT50 Hydraulic Chucks

## Features

- \* 3  $\mu\text{m}$  - 0.0001" or less run-out providing premium performance in drilling and reaming applications
- Positive Locking System
- Coolant Thru the Center
- Designed for Tool Shanks w/ ISO h6 Class Tolerance
- Dynamically Pre-Balanced G2.5 @ 25,000 RPM or < 1gmm
- Tapers are ground better than AT3 for optimal T.I.R.

## Optional (Order Separately):

- Wrench
- Sealed Collets
- Mill Chuck Collets



Part Number	D Bore	D2	D3	A1	L1 Projection	L2	L3 Max Tool Enters	Wrench
CAT50-HC075-0319	0.7500	1.50	1.94	25°	3.19	2.44	2.01	MXW05
CAT50-HC125-0319	1.2500	2.30	2.83	18.7°	3.19	2.44	2.40	MXW05