

# Shell Mill Screws

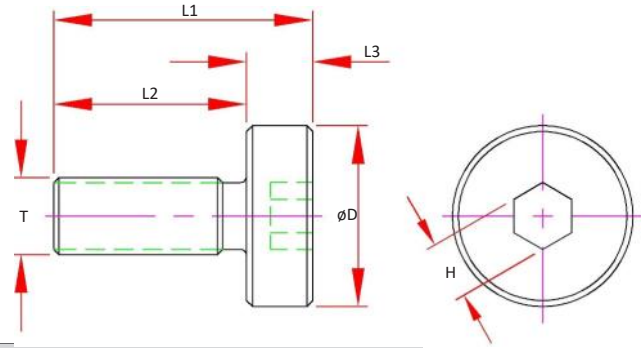
Replacement screw for catalog holders

**Note:**

Coolant Screws not available.

- Coolant flow from a modified screw does not feed full volume to the inserts
- Modifying the screw weakens the screw causing damage to the cutter and machine tool

FX Holders are available for coolant cutter applications



Shell Mill Pilot	Mount Screw Number	T Thread (UNF)	D	H Hex	L1	L2	L3	Maximum Tightening Torque
1/2	SCW-SM050	1/4-28	0.62	0.25	0.91	0.63	0.28	14 ft/lbs
1/2	SCW-SM050-SM	1/4-28	0.38	0.25	1.00	0.75	0.25	14 ft/lbs
3/4	SCW-SM075	3/8-24	0.87	0.31	1.26	0.79	0.31	45 ft/lbs
3/4	SCW-SM075-SM	3/8-24	0.56	0.31	1.38	1.00	0.38	45 ft/lbs
1	SCW-SM100	1/2-20	1.18	0.38	1.69	1.26	0.43	60 ft/lbs
1	SCW-SM100-SM	1/2-20	0.75	0.38	2.00	1.50	0.50	60 ft/lbs
1-1/4	SCW-SM125	5/8-18	1.50	0.50	2.05	1.57	0.47	70 ft/lbs
1-1/2	SCW-SM150	3/4-16	1.89	0.63	2.36	1.81	0.55	75 ft/lbs
2"	SCW-SM200	1"-14	2.48	0.83	2.52	1.97	0.55	80 ft/lbs

# Shell Mill Drive Keys

Kit includes

- (2) Drive Keys
- (2) Mounting Screws



Shell Mill Pilot	Drive Key Number	Drive Key Size	Specifications
1/2	DK-SM050	0.250	
3/4	DK-SM075	0.312	
1"	DK-SM100	0.375	
1"	DK-SM100-B	0.375	Fits BT30-SM100-0119
1-1/4	DK-SM125	0.500	
1-1/2	DK-SM150	0.625	
1-1/2	DK-SM150-C	0.625	Fits CAT50-SM150-0240
2"	DK-SM200	0.750	

CAT40

CAT50

BT30

BT40

HSK 40E

HSK 63A

HSK 100A

STRAIGHT SHANKS

COLLETS

PARTS & ACC.

SHRINK MACHINES

INDEXERS

