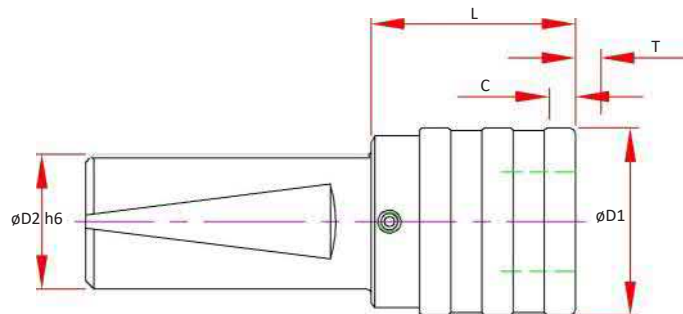


TC - Straight Shank

Features:

- Non Coolant
- Flats for Lathe Applications
- Compatible with industry standards
- TC Holders are not designed for Coolant Thru

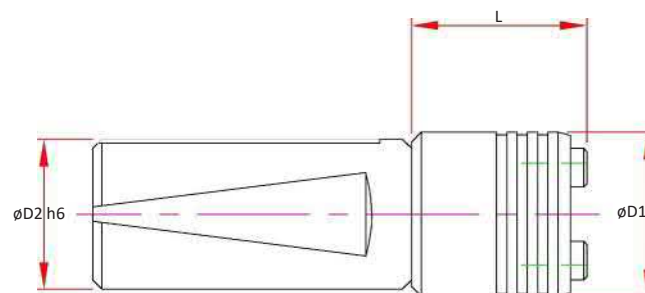


Size	Part Number	Capacity	D1	D2	L	T TENSION	C COMP.
1	S100-TC1-0158	#6 - 9/16	1.42	1.000	1.58	0.30	0.30
2	S100-TC2-0256	5/16 - 7/8	2.09	1.000	2.36	0.49	0.49
3	S125-TC3-0504	9/16 - 1-3/8	3.07	1.250	3.94	0.79	0.79

RT - Straight Shank

Features:

- Flats for Lathe Applications
- Compatible with industry standards



Size	Part Number	Capacity	D1	D2	L
1	S100-RT1-0158	#6 - 9/16	1.34	1.000	1.57
2	S100-RT2-0237	5/16 - 7/8	1.93	1.000	2.36
3	S125-RT3-0375	9/16 - 1-3/8	2.89	1.250	3.74

CAT40

CAT50

BT30

BT40

HSK 40E

HSK 63A

HSK 100A

STRAIGHT SHANKS

COLLETS

PARTS & ACCESS.

SHRINK MACHINES

INDEXERS

