

# Straight Shank End Mill Adapters

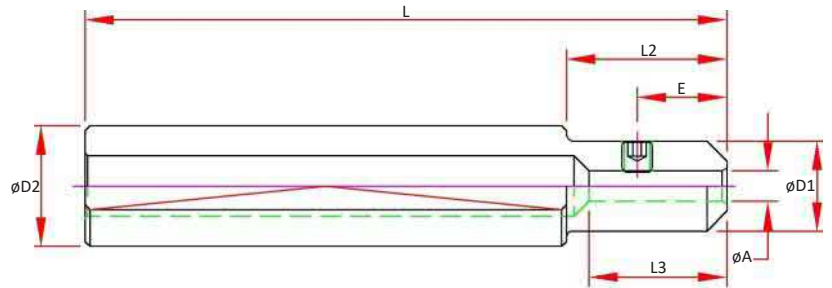


## Features

- 3  $\mu\text{m}$  - 0.0001" Bore Runout
- H5 Bore Tolerance or better
- Coolant Thru

## Optional (Order Separately):

- Jet-Blast (add "J" to the part number)



	Part Number	A	D1	D2	E	L Length	L2	L3 Max. Tool Enters	Screw Number
1/8	S075-EM012-0600	0.1250	0.50		0.19		2.00		1
3/16	S075-EM018-0600	0.1875	0.56	0.7500	0.44		2.00		2
1/4	S075-EM025-0600	0.2500	0.75		0.59	6.00	-	6.00	4
5/16	S075-EM031-0600	0.3125	0.75		0.44		-		4
3/8	S100-EM037-0600	0.3750	1.00		0.75		-		5
1/2	S100-EM050-0600	0.5000	1.00	1.0000	0.39 & 0.98		-		(2) 4

CAT40

CAT50

BT30

BT40

HSK 40E

HSK 63A

HSK 100A

STRAIGHT SHANKS

COLLETS

PARTS & ACCESS.

SHRINK MACHINES

INDEXERS

