

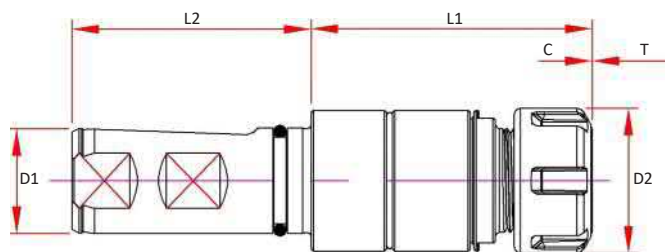
Precision Sync Tapping ER Straight Shank

Features

- Coolant Thru, for use up to 1,500 PSI
- Compensates for synchronization errors in the tap cycle
- Minimal length compensation in both Tension and Compression compensates for small pitch differences between the spindle and tap reducing friction on the tap flanks

Optional (Order Separately):

- Wrench
- Torque Wrench
- Collets



| Part Number | Collet Type | D1 | D2 | L1 | L2 | C | T | Wrench |
|----------------|-------------|------|------|------|------|------|------|---------|
| S100-PT20-0268 | ER20 | 1.00 | 1.34 | 2.79 | 2.28 | 0.02 | 0.02 | ERW-20H |
| S100-PT32-0325 | ER32 | 1.00 | 1.97 | 3.25 | 2.28 | 0.02 | 0.02 | ERW-32E |

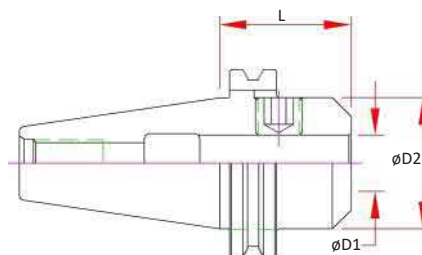
Modular Taper Assembly

Features

- Coolant Thru, for use up to 1,500 PSI
DIN B flange coolant available in some models
- For Total Projection:
Add "L" from chart below with "L1" from chart above
- Longer projections available see EM section of the catalog

Optional (Order Separately):

- Wrench
- Torque Wrench
- Collets



| Dual Contact Spindle Part Number | Standard Spindle Part Number | D1 | D2 | L |
|----------------------------------|------------------------------|-------|------|------|
| BT30-EM100-0275-B | BT30-EM100-0275 | 1.000 | 2.00 | 2.75 |
| BT40-EM100-0200-B | BT40-EM100-0200 | | 2.00 | 2.00 |
| CAT40-EM100-0175-B | CAT40-EM100-0175 | | 1.75 | 1.75 |
| CAT50-EM100-0162-B | CAT50-EM100-0162 | | 2.75 | 1.62 |
| | HSK 63A-EM100-0400 | | 2.00 | 4.00 |
| | HSK100A-EM100-0400 | | 2.00 | 4.00 |