

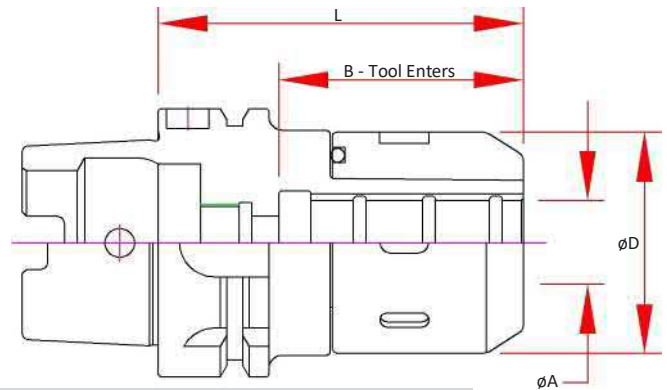
HSK100A Mill Chuck

Features

- 5 μm - 0.0002" Runout @ 4 x Cutter Shank Dia.
- Designed for Tool Shanks w/ ISO h6 Class Tolerance
- Pre-Balanced for use @ 20,000 RPM

Optional (Order Separately):

- Wrench
- Nylon Screw Seal for short tool shanks
- Fine Trim Balance (Sample cutter required for balance compensation)

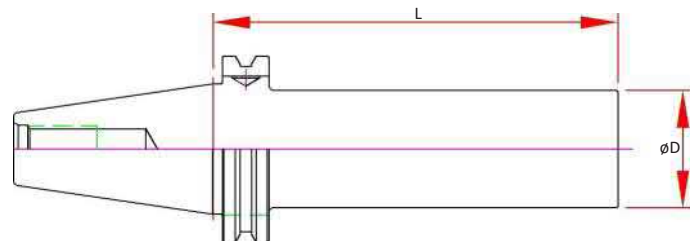


	Part Number	A Bore	B Max. Tool Enters	D	L Projection	Preset Screw	Collet	Wrench
3/4	HSK100A-MC075-0453	0.7500	2.52	2.09	4.53	ASC-16-18	MC075	50-55 HOOK
1"	HSK100A-MC100-0512	1.0000	2.40	2.44	5.12	ASC-16-18	MC100	58-65 HOOK
1-1/4	HSK100A-MC125-0531	1.2500	3.07	2.76	5.31	ASC-16-18	MC125	65-70 HOOK
20mm	HSK100A-MC20-115	20.000	2.52	2.09	4.53	ASC-16-18	MC20	50-55 HOOK
32mm	HSK100A-MC32-135	32.000	3.07	2.76	5.31	ASC-16-18	MC32	65-70 HOOK

TB - Test Bar

Features

- Concentric to Taper within 3 μm (0.0001") TIR
- Tapers are ground better than AT3 for optimal T.I.R.
- Hardened & Normalized for consistency
- 100% Individually inspected with Certification Sheet included
- Wood Box Included
- Laser Marked with Actual Diameter and Length



Part Number	Spindle	D	L Projection
HSK100A-TB50-320	HSK100A & C	50mm	320mm