

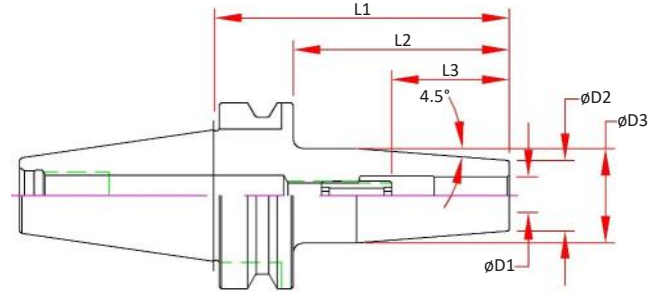
BT30 Dual Contact Shrink Fit - Inch

Features

- 3 μm - 0.0001" Runout Taper to Bore
- Manufactured from ISO-40CrMoV5 (H13) Material, Heat Treated for Optimum Elasticity and Tool Life
- Coolant Thru the Center
- Tapers are ground better than AT3 for optimal T.I.R.
- Dynamically Balanced for G2.5 @ 25,000 RPM or < 1 gmm
- Preset Screw included for 1/4" & larger for positive stop
- **Designed for Carbide Cutting Tools with h6 shank tolerance**

Optional (Order Separately):

- Jet-Blast Coolant Ports - Add "J"
- Fine Trim Balance (Sample cutter required for balance compensation)



P-134

Dual Contact Spindle Part Number	D1 Bore	D2	D3	L1 Projection	L2	L3 Max Tool Enters	Preset Screw
BT30-SD012-080-B	0.1250	0.39	0.77	3.15	2.17	3.72	-
BT30-SD018-080-B	0.1875	0.39	0.77	3.15	2.17	3.72	-
BT30-SD025-080-B	0.2500	0.83	1.06	3.15	2.17	1.54	SCW-ASC-05-23
BT30-SD031-080-B	0.3125	0.83	1.06	3.15	2.17	1.54	SCW-ASC-06-23
BT30-SD037-080-B	0.3750	0.94	1.26	3.15	2.17	1.73	SCW-ASC-08-23
BT30-SD050-080-B	0.5000	0.94	1.26	3.15	2.17	1.97	SCW-ASC-10-23
BT30-SD062-080-B	0.6250	1.06	1.34	3.15	2.17	2.09	SCW-ASC-12-23
BT30-SD075-090-B	0.7500	1.30	1.65	3.54	2.56	2.09	SCW-ASC-12-23