



6K Shrink Pack 2021

Complete Shrink Fit Heating & Water Cooling System

Less than **1** minute Back to machine

What's Included in the Package:

HS-6K Shrink Unit

- * #HS-6K
- * 1/8-3/4 (3-20mm) Capacity
- * 220V, 24A Single Phase
- * 6kw Output, Air Cooled Coil
- * Automatic Coil Return
- * Easy to use timer system
- * For tools with up to a 12.5" Projection
- * 1 Year Limited Warranty
- * CE Certified
- * **10-20 Second Cycle Time**



HS Cooling Unit

- * #HS-WC
- * Water Cooling with Shop Coolant (Water Based)
- * Separate Cooling, cool 1st tool while heating the 2nd
- * 220V, 20A Single Phase
- * 1 Year Limited Warranty
- * CE Certified
- * **30-40 Second Cycle Time**



Packages to choose from, with and without cooling:

HS-6K Package Includes Machine +

(2) Bases



(5) Holders, see 2nd page



WC Package Includes HS-6K Package + Water Cooling Unit +

HS-Cool Extension



HS-Cool Cutter Tray

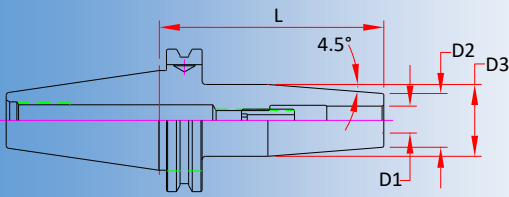


↓ ↓ Select your package below ↓ ↓

CAT40	CAT40-B** Dual Contact	CAT50	BT30-B** Dual Contact	BT40	HSK063A	HSK100A
Shrink Pack \$6,150	Shrink Pack \$6,300	Shrink Pack \$6,750	Shrink Pack \$6,350	Shrink Pack \$6,200	Shrink Pack \$6,350	Shrink Pack \$6,750
Shrink Pack + WC \$7,700	Shrink Pack + WC \$7,800	Shrink Pack + WC \$8,300	Shrink Pack + WC \$7,900	Shrink Pack + WC \$7,800	Shrink Pack + WC \$7,850	Shrink Pack + WC \$8,250

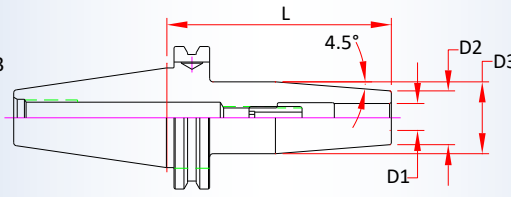
**BT30-B & CAT40-B are Dual Contact for Face Contact Spindles, may work in standard spindle if the spindle conforms to JMTBA & ANSI standards.

All pricing shown in USD and do not include any taxes. International customers are subject to any and all duty's and additional taxes that may apply. International customers are responsible for freight charges from warranty claims. Limited time only. All prices subject to change without notice. Contact our customer service department for details and pricing.



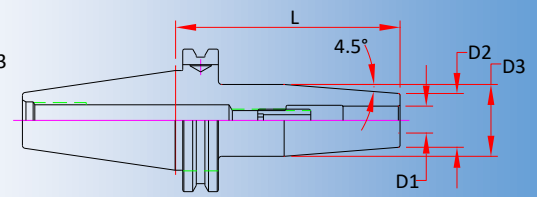
CAT40

Part Number	D1	D2	D3	L
CAT40-SD025-080	0.2500	0.83	1.06	3.15
CAT40-SD031-080	0.3125	0.83	1.06	3.15
CAT40-SD037-080	0.3750	0.94	1.26	3.15
CAT40-SD043-080	0.4375	0.94	1.26	3.15
CAT40-SD050-080	0.5000	0.94	1.26	3.15
CAT40-SD062-080	0.6250	1.06	1.34	3.15
CAT40-SD075-080	0.7500	1.30	1.65	3.15



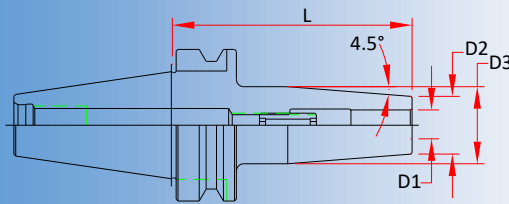
CAT40-B** (Dual Contact)

Part Number	D1	D2	D3	L
CAT40-SD025-080-B	0.2500	0.83	1.06	3.15
CAT40-SD037-080-B	0.3750	0.94	1.26	3.15
CAT40-SD050-080-B	0.5000	0.94	1.26	3.15
CAT40-SD062-080-B	0.6250	1.06	1.34	3.15
CAT40-SD075-080-B	0.7500	1.30	1.65	3.15



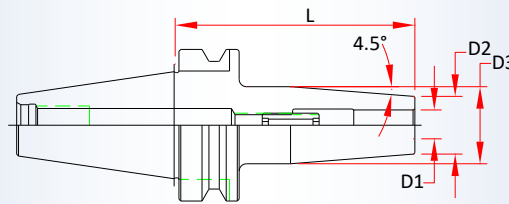
CAT50

Part Number	D1	D2	D3	L
CAT50-SD025-080	0.2500	0.83	1.06	3.15
CAT50-SD031-080	0.3125	0.83	1.06	3.15
CAT50-SD037-080	0.3750	0.94	1.24	3.15
CAT50-SD050-080	0.5000	0.94	1.24	3.15
CAT50-SD062-080	0.6250	1.06	1.34	3.15
CAT50-SD075-080	0.7500	1.30	1.61	3.15



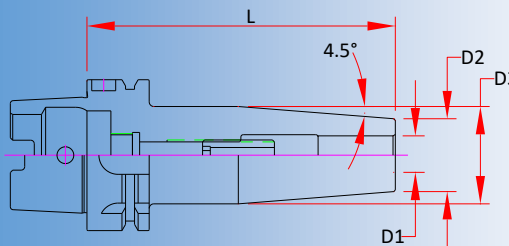
BT30-B** (Dual Contact)

Part Number	D1	D2	D3	L
BT30-SD025-080-B	0.2500	0.83	1.06	3.15
BT30-SD031-080-B	0.3125	0.83	1.06	3.15
BT30-SD037-080-B	0.3750	0.94	1.26	3.15
BT30-SD050-080-B	0.5000	0.94	1.26	3.15
BT30-SD062-080-B	0.6250	1.06	1.34	3.15
BT30-SD075-090-B	0.7500	1.30	1.65	3.54



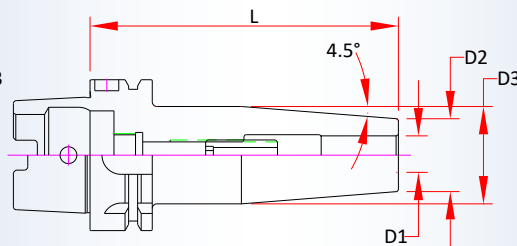
BT40

Part Number	D1	D2	D3	L
BT40-SD025-090	0.2500	0.83	1.06	3.54
BT40-SD031-090	0.3125	0.83	1.06	3.54
BT40-SD037-090	0.3750	0.94	1.26	3.54
BT40-SD050-090	0.5000	0.94	1.26	3.54
BT40-SD062-090	0.6250	1.06	1.34	3.54
BT40-SD075-090	0.7500	1.30	1.65	3.54



HSK 63A

Part Number	D1	D2	D3	L
HSK063A-SD025-080	0.2500	0.83	1.06	3.15
HSK063A-SD031-080	0.3125	0.83	1.06	3.15
HSK063A-SD037-085	0.3750	0.94	1.06	3.35
HSK063A-SD050-090	0.5000	0.94	1.26	3.54
HSK063A-SD062-095	0.6250	1.06	1.34	3.74
HSK063A-SD075-100	0.7500	1.30	1.65	3.94



HSK 100A

Part Number	D1	D2	D3	L
HSK100A-SD025-085	0.2500	0.83	1.06	3.35
HSK100A-SD031-085	0.3125	0.83	1.06	3.35
HSK100A-SD037-090	0.3750	0.94	1.24	3.54
HSK100A-SD050-095	0.5000	0.94	1.26	3.74
HSK100A-SD062-100	0.6250	1.06	1.34	3.94
HSK100A-SD075-105	0.7500	1.30	1.61	4.13

**BT30-B & CAT40-B are Dual Contact for Face Contact Spindles, may work in standard spindle if the spindle conforms to JMTBA & ANSI standards.

PIONEER N.A., INC. Premium Tool & Work Holding

641 Fargo Ave., Elk Grove Village, IL 60007

sales@PioneerNA.com | 847-593-6000 | www.PioneerNA.com